

ARIANA RESOURCES plc

**JEOMATERYAL TARAMA
HİZMETLERİ**

Sinem OĞUZ

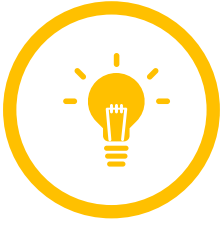
M. Mert GÜMÜŞ

Eylül 2022

**Otomatik Çok Sensörlü
Loglama-Tarama
Teknolojisi**

ARIANA RESOURCES plc

Sunum İeriđi

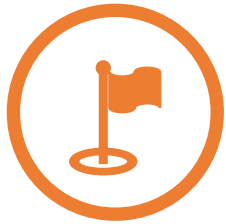


Otomatik ok Sensörlü Loglama-Tarama Teknolojisi

Analiz Cihazları ve Uygulamaları



Kalite Güvence ve Kalite Kontrol



Veri Toplama ve Deđerlendirme



ARIANA RESOU



xscan

GEO
TEK

scanCONTROL

LANTIA

1790

2000

ARIANA RESOURCES

Analiz Cihazları ve Uygulamaları

Kimyasal Analiz için pXRF
(Olympus Vanta™ VMR Handheld XRF Analyzer)

Mineralojik Değerlendirme
(ASD LabSpec 4)

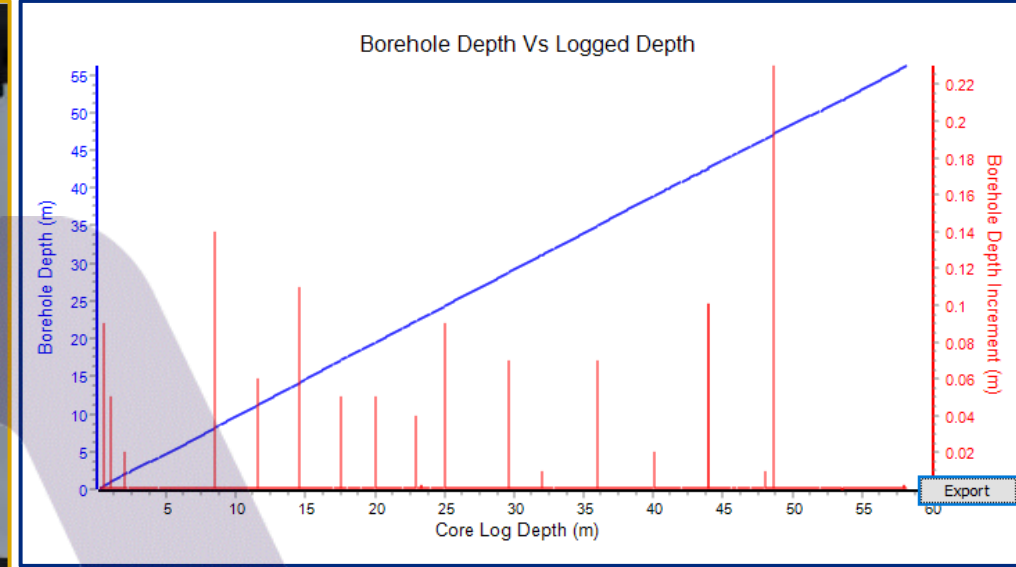
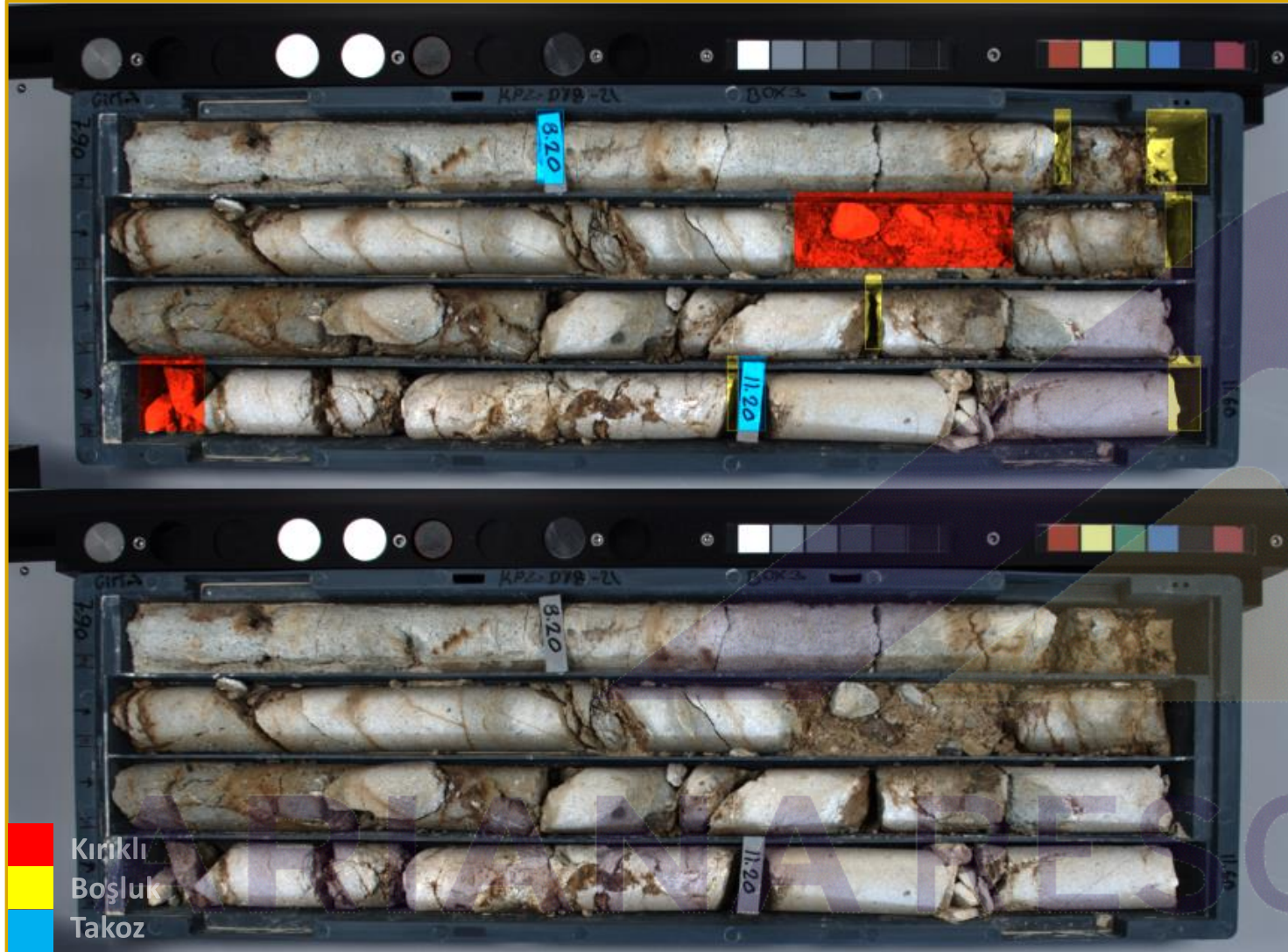
RGB Renk Taraması
(Canon EF-S 24 mm UHD Core Images)

Jeoteknik Loglama
(Micro-Epsilon scanCONTROL)

Yüksek Çözünürlüklü Fotoğraflama
(Canon EF-S 24 mm UHD Core Images)

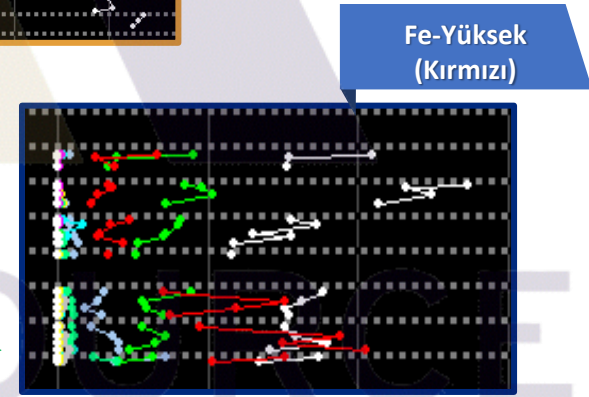
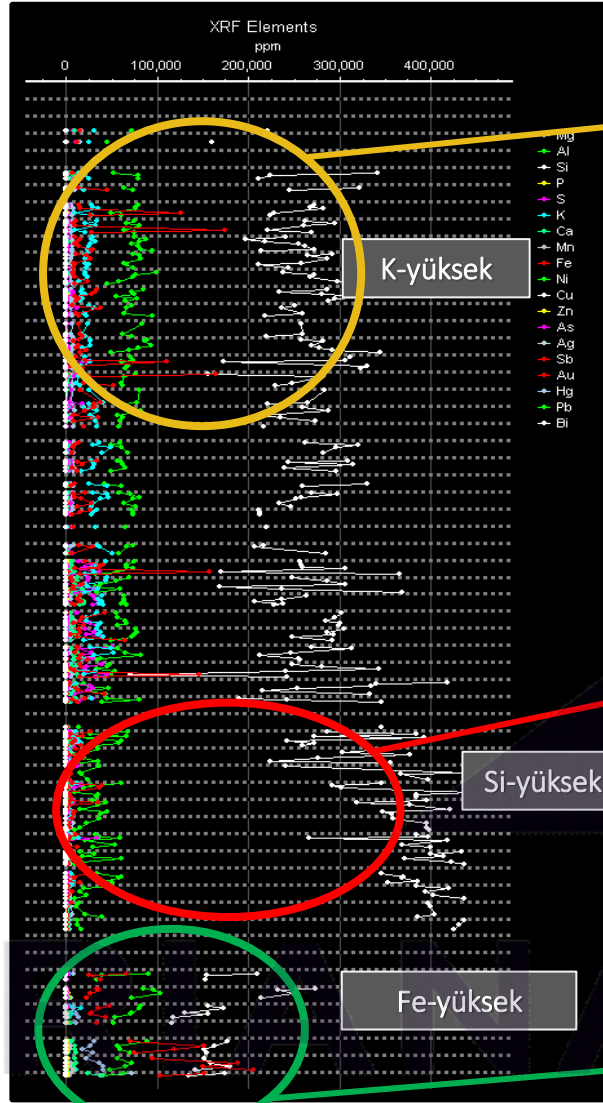
Manyetik Duyarlılık Analizi
(Bartington® MS2 Magnetic Susceptibility)

Kürasyon & Proses



JEOLOG ÖLÇÜMÜ				BOXSCAN ÖLÇÜMÜ		DERİNLİK FARKI (m)
KAROT SANDIĞI	KANAL NUMARASI	ÖLÇÜM NOKTALARI (cm)	KUYU DERİNLİĞİ (m)	KANAL NUMARASI	KUYU DERİNLİĞİ (m)	
4	13	20	11,80	13	11,80	0,00
		34	11,94		11,94	0,00
		46	12,06		12,06	0,00
		57	12,17		12,17	0,00
		70	12,28		12,3	0,02
	14	84	12,42	12,44	0,02	
		14	12,71	12,72	0,01	
		24	12,81	12,82	0,01	
		58	13,12	14	13,16	0,04
		72	13,25	13,30	0,05	
15	18	13,78	15	13,69	-0,09	

Kimyasal Analiz için pXRF



Litoloji / Element	Mg	Al	Si	Fe	P	S	K	Ca	Cr	Mn	Ni	Zn
Dasit	4.3	54.2	273.8	17.7	291	1.6	21.0	6.5	89	281	16	28
Kuvars Damarı	6.2	21.6	413.4	1.1	0	212	1.4	2.0	0	0	0	0
Ofiyolit (Serpantin)	27.7	54.4	161.8	151.9	1.2	775	3.0	10.0	283	4.4	360	162

Manyetik Duyarluluk Analizi

Ferromanyetik mineraller ve elementler
Fe, Ni, Co

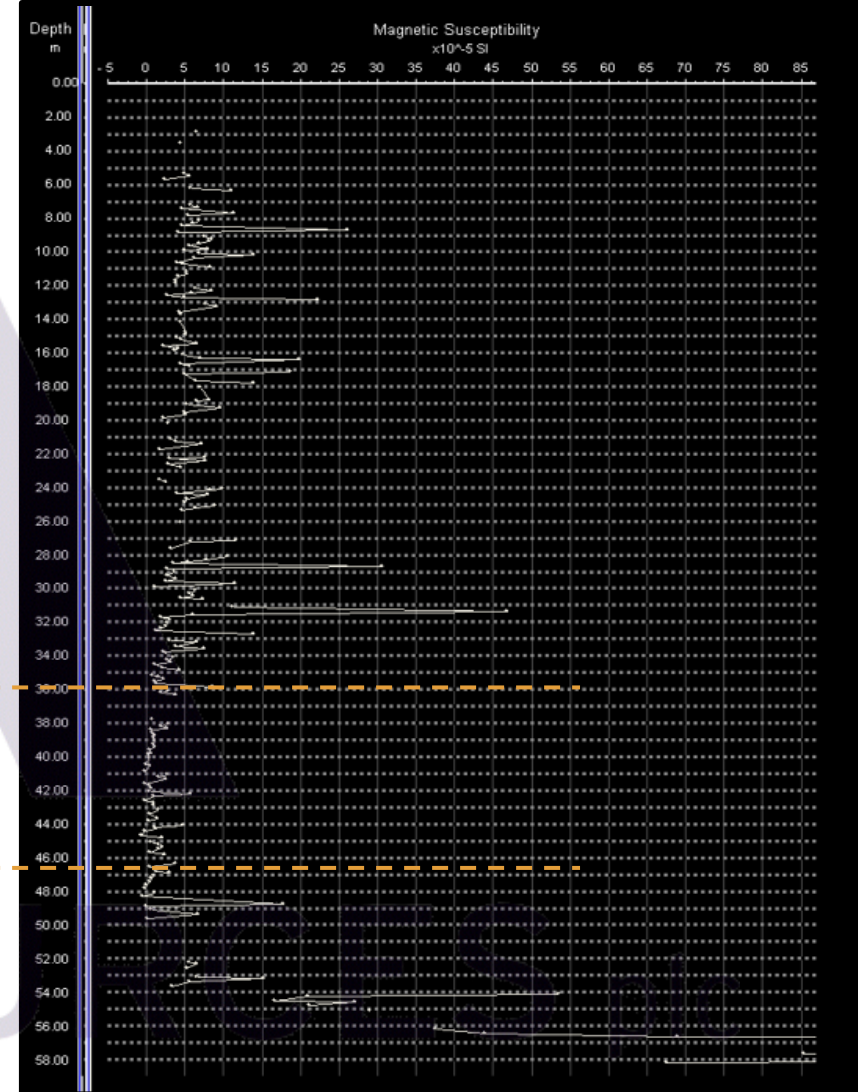
Diamanyetik mineraller ve elementler
Au, Ag, Hg

Paramanyetik mineraller ve elementler
Al, Ca, Mg

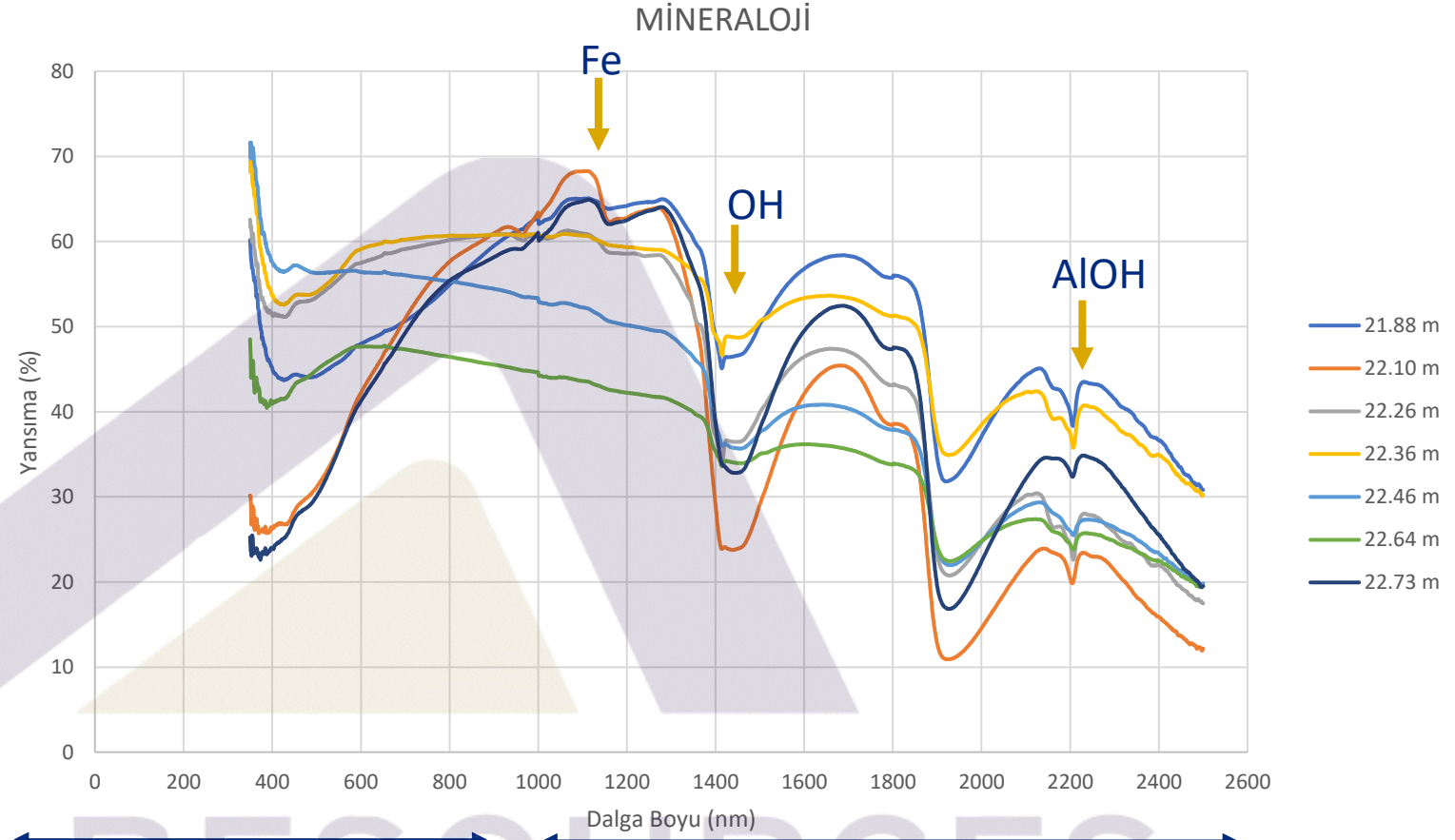
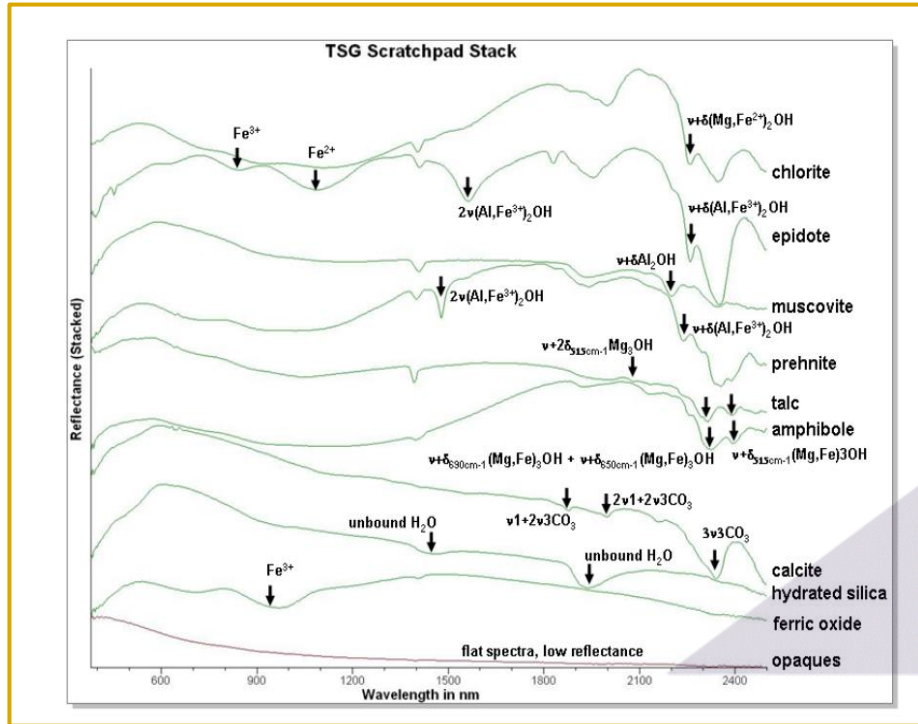
Diamanyetik

Paramanyetik

Ferromanyetik



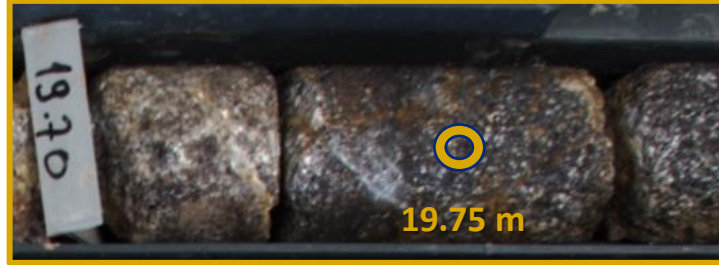
Mineralojik Değerlendirme



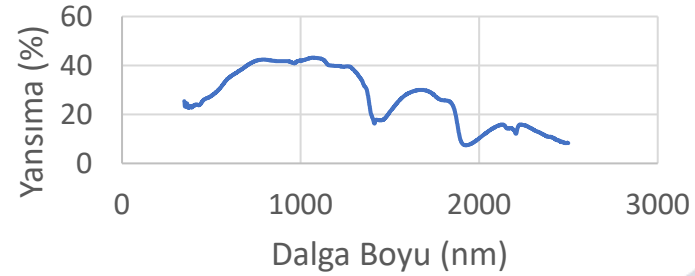
ARIANA RESOURCES plc

← VNIR (Görünür Yakın Kızılötesi) | SWIR (Kısa Dalga Boyu Kızılötesi) →

Mineralojik Değerlendirme



Dasit



VNIR Mineralleri

Hematit : 5.5 %

SWIR Mineralleri

Halloysite : 9.3 %
Montmorillonit : 7.4 %

VNIR Mineralleri

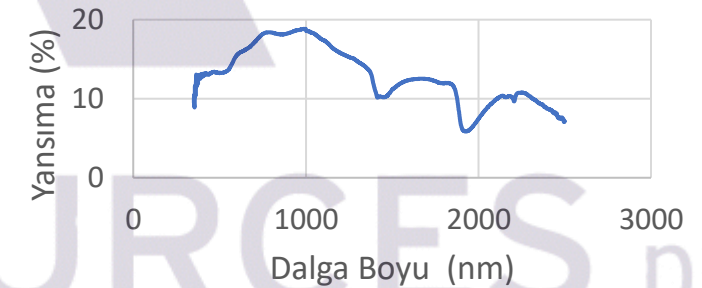
Hematit : 36.4 %
Götit : 25.7 %

SWIR Mineralleri

Kaolinit : 21.9%
Montmorillonit : 36.7 %



Dasit



VNIR Mineralleri

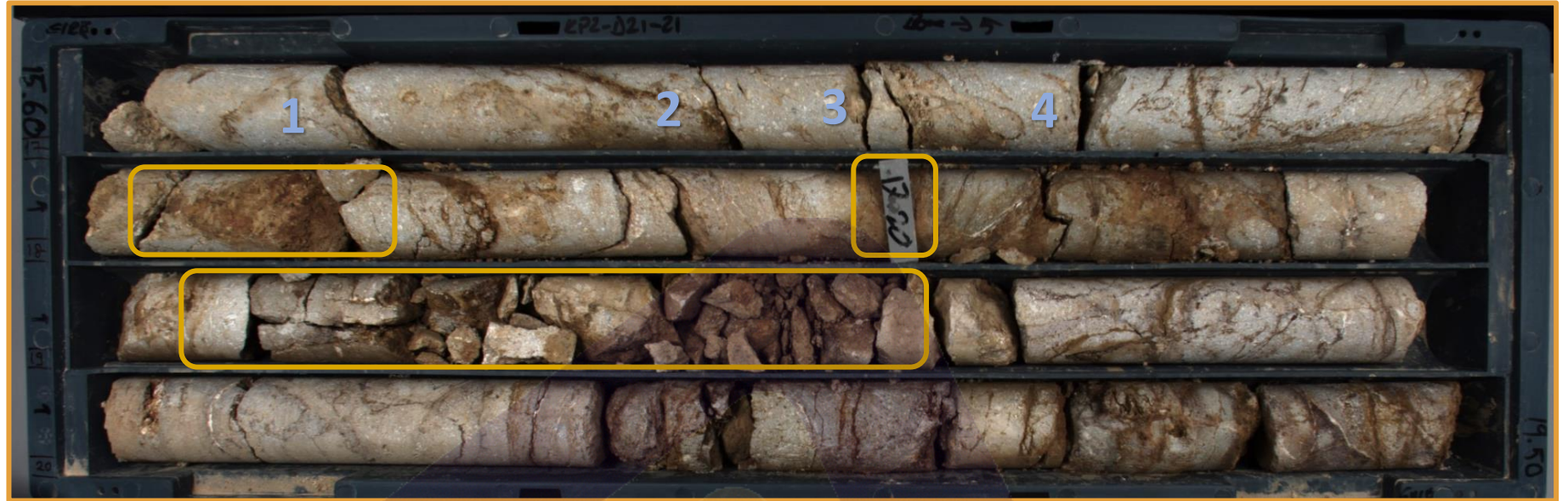
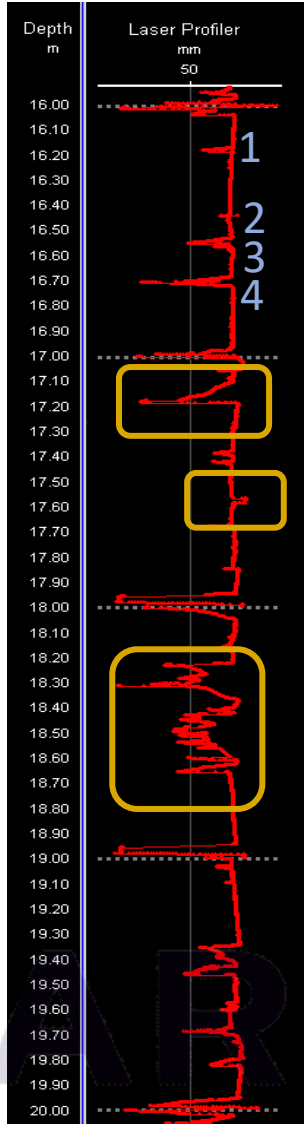
Hematit : 31.7 %
Limonit : 8.0 %

SWIR Mineralleri

Kaolinit : 7.0 %
Montmorillonit : 18.7 %

ARIANA RESOURCES plc

Jeoteknik Değerlendirme



- TCR
- RQD
- Kırık Çatlak Sayısı
- Kırık Çatlak Aralığı

Proje Adı	Kuyu Adı	Kuyu Derinliği Başlangıç m	Parça Uzunluğu cm	Pekleştirilmiş Parça Uzunluğu cm	RQD %	Kırık Çatlak Sayısı	Çatlak Aralığı
X North	Kuyu-1	33			87.9	6	0.16667
X North	Kuyu-1	33.121	17	17			
X North	Kuyu-1	33.291	10	10			
X North	Kuyu-1	33.391	12	12			
X North	Kuyu-1	33.511	13	13			
X North	Kuyu-1	33.641	20	20			
X North	Kuyu-1	33.841	28	28			
X North	Kuyu-1	34	100		64.1	6	0.16667

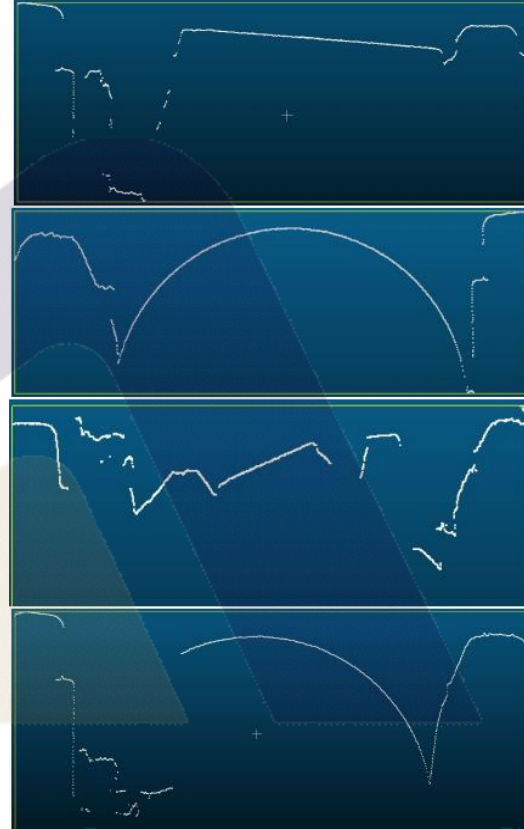
Jeoteknik Değerlendirme



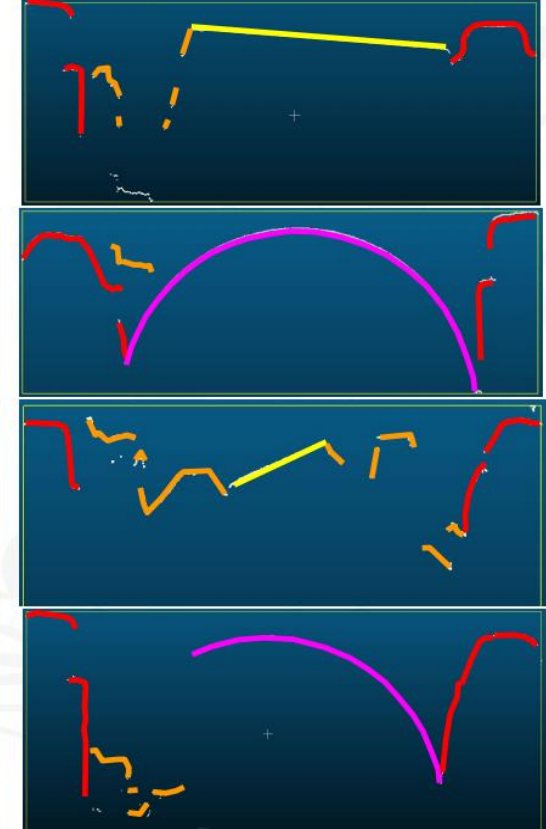
Lazer hattı boyunca

Karot Topografyası 2D aktarma

Lazer Profili



Yüzey Tiplerine Göre Sınıflama



- Whole core
- Half core/flat
- rubble
- tray

Yüksek Çözünürlüklü Fotoğraflama



Kalite Güvence & Kalite Kontrol

QAQC Hat Tarama Fotoğrafi

Zn-Al-Mg Kontrol
Parçası

MagSus
Kontrol Parçası

RGB Renk
Paletleri

RGB Renk
Paletleri

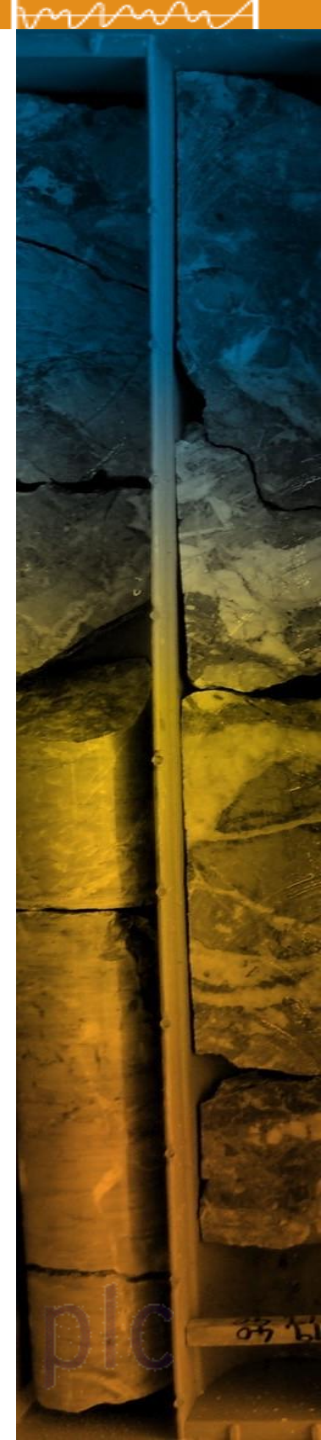
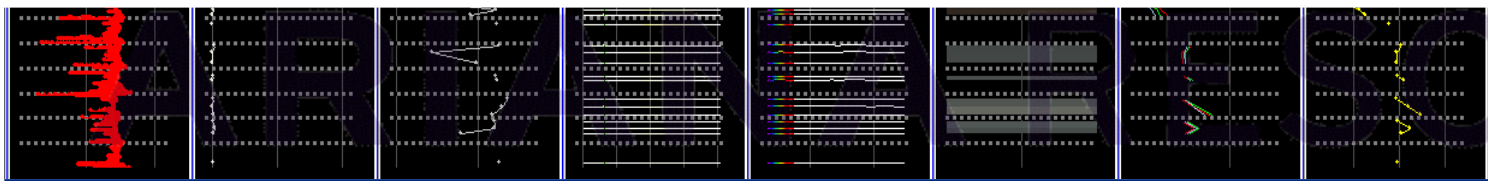
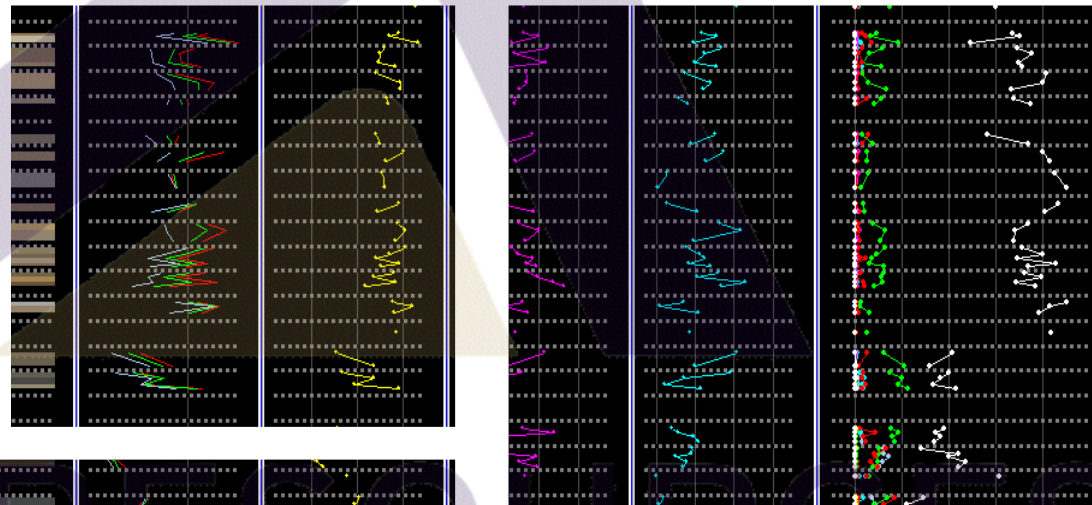
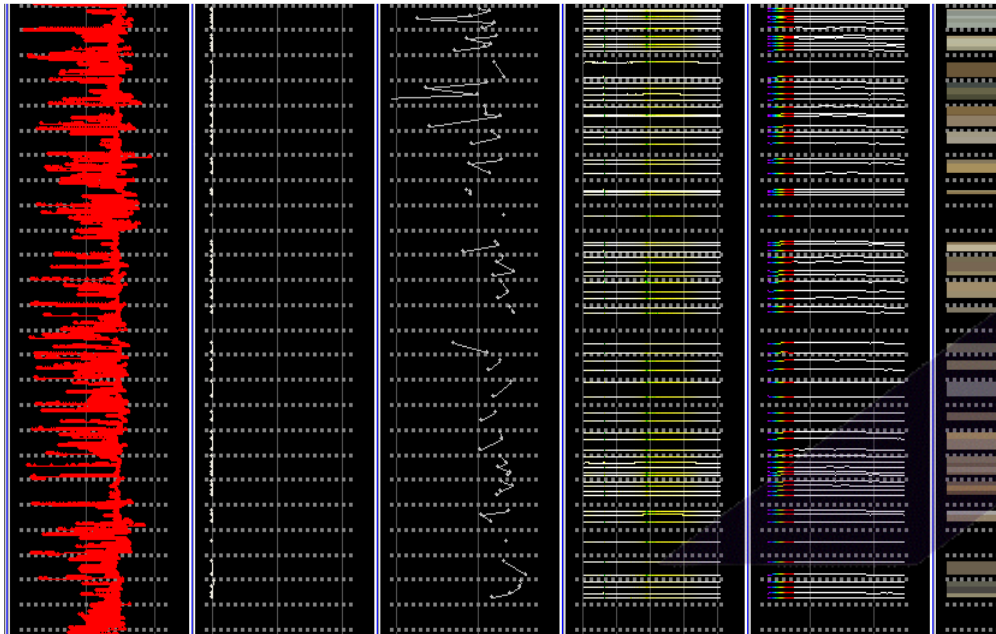
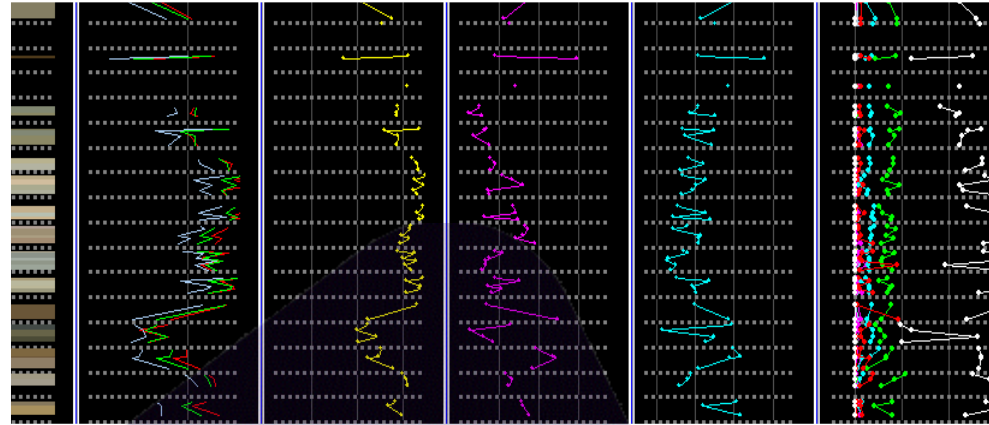
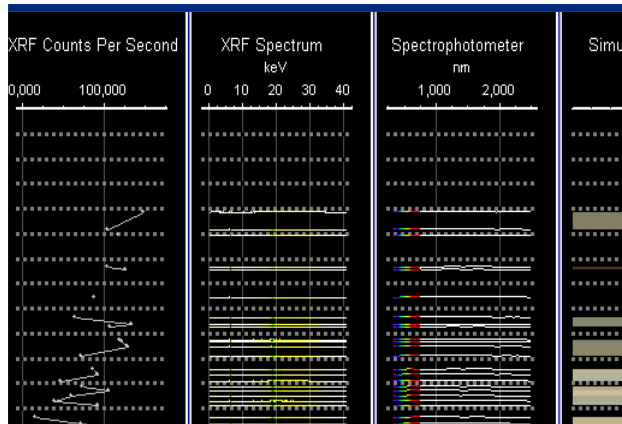


QAQC Alan Tarama Fotoğrafi

QAQC Analiz Tablosu

QAQC Strip Tracker				sheet is for Geotek operators														
Project:		Test		Mag Susc check std			ASD – grey square 3 (white = 1, white tile cal)			XRF - Zn-Al-Mg check standard			Linescan image – grey square 3 (white = 1)			Area scan image – grey square 3 (white = 1)		
Borehole ID	Date Logged	Logged By	Time (Turkish Time)	in SI units (x 10 ⁻⁵)	L*	a*	b*	Total counts (Beam 1)	Zn [ppm]	Al [ppm]	Mg [ppm]	R	G	B	Grey	R	G	B
			Target	399	55,4	-7,6	-3,1	1354122	6413	73119	909774	16662	16594	18511	59	60	66	79
			tolerance	10%	5%	10%	10%	5%	5%	5%	5%	5%	5%	5%	5%	5%	5%	5%
KPZ-D08-21	2021-08-04	ARES	17:41:00	379,2	55,9	-7,72	-3,08	1364601	6489	69659	916203	17451	16469	18469	61	61	68	78
KTP-D08-21	2021-08-05	ARES	06:15:00	376,1	55,8	-7,76	-3,10	1363357	6535	71852	914085	16776	16721	18635	57	57	63	72
KTP-D08-21	2021-08-05	ARES	07:32:00	373,4	55,8	-7,79	-3,10	1362509	6499	70082	915457	16603	16555	18481	58	59	63	77
KTP-D08-21	2021-08-05	ARES	09:20:00	371,9	55,9	-7,80	-3,08	1368013	6497	71221	914287	16607	16508	18418	60	60	64	79
KPZ-D14-21	2021-08-05	ARES	11:54:00	369,2	55,9	-7,76	-3,10	1364287	6465	70886	914483	16926	16817	18737	62	62	65	82

Veri Toplama

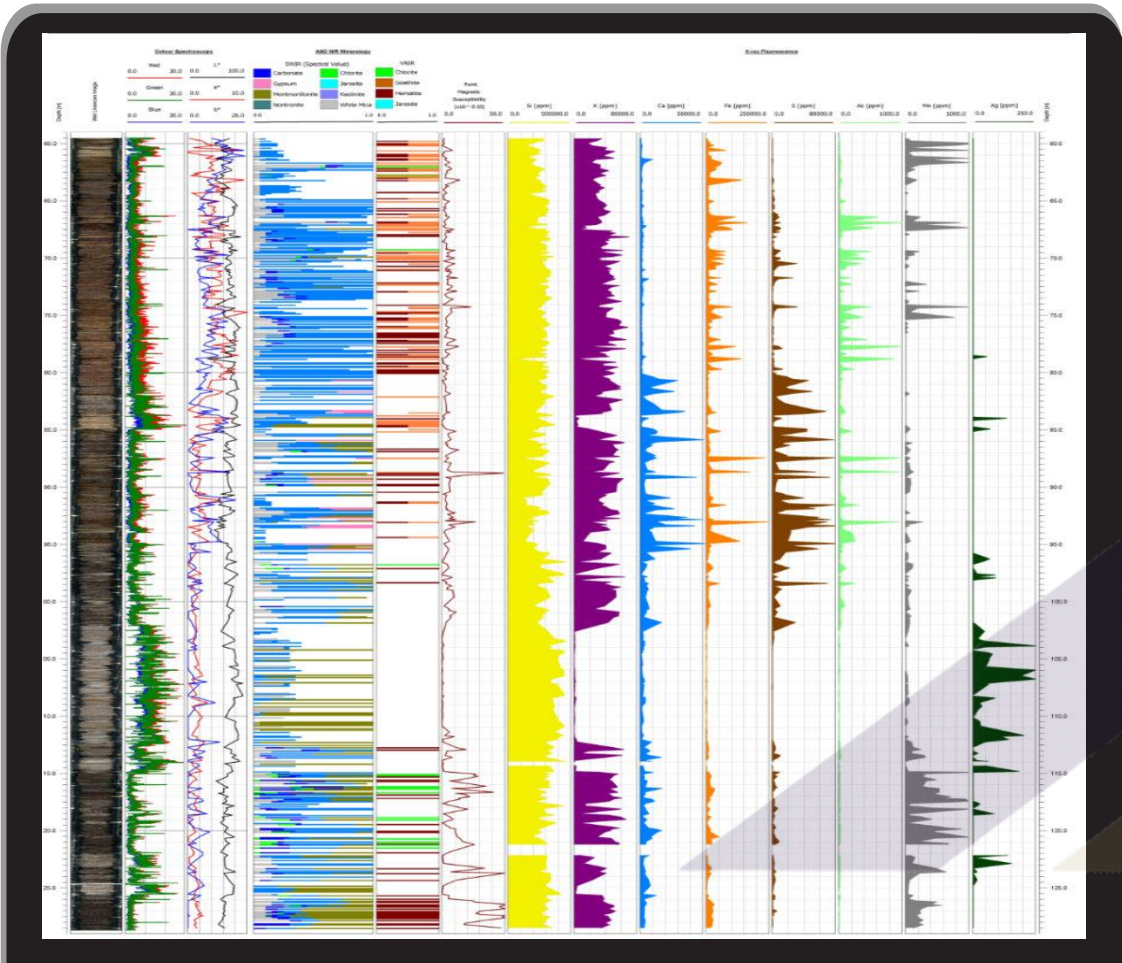


SOURCES

plc

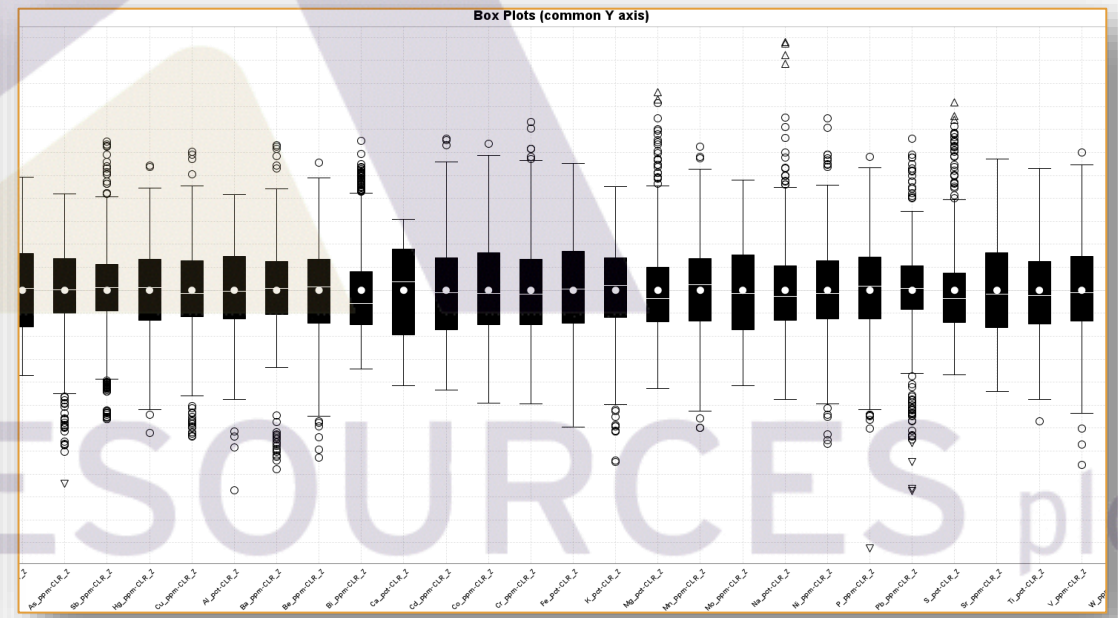
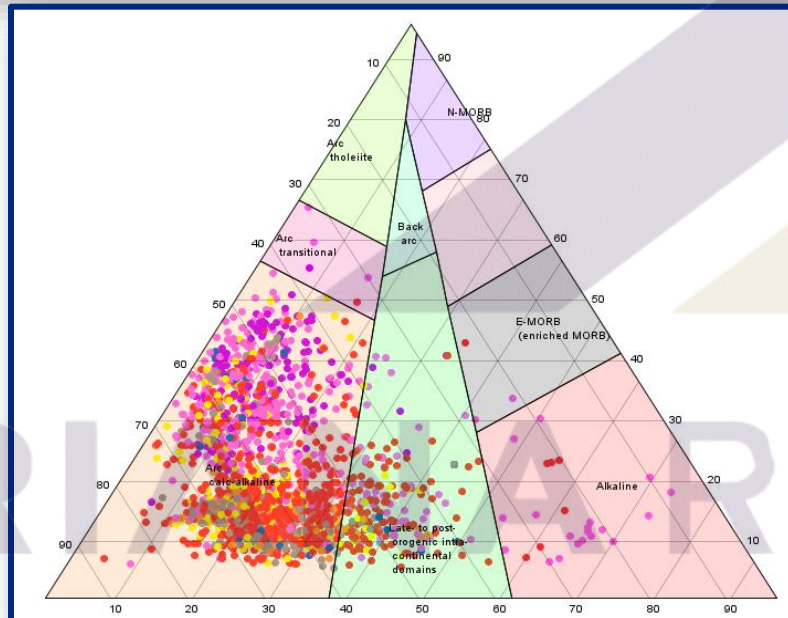
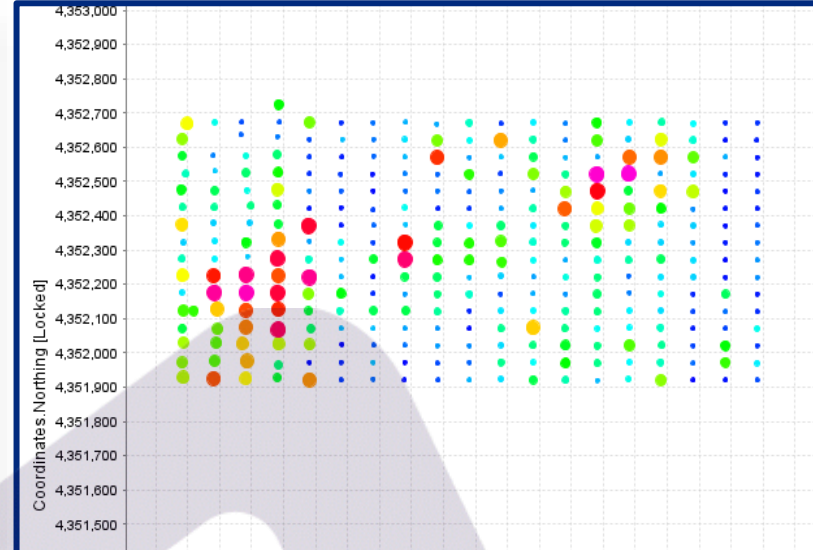
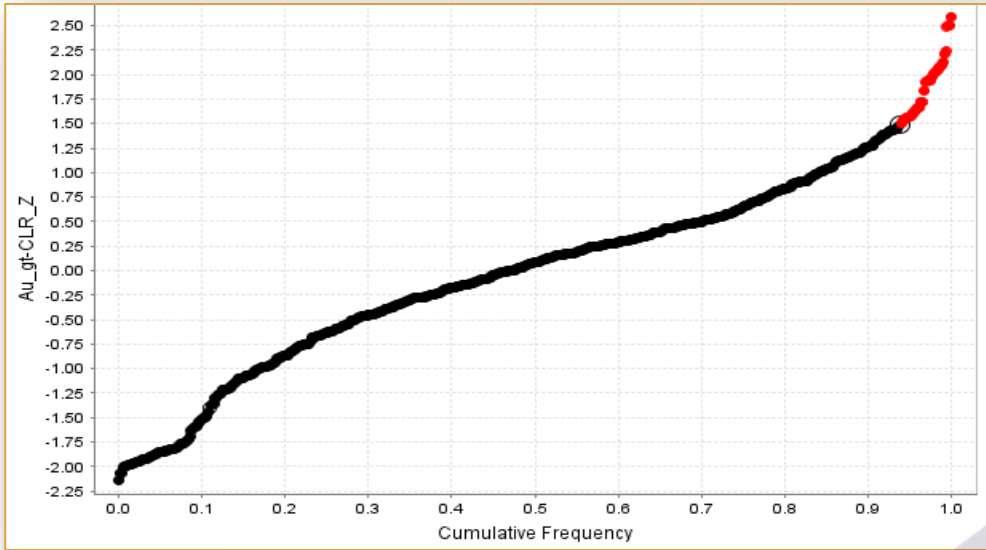
05 21

Veri Çıktısı



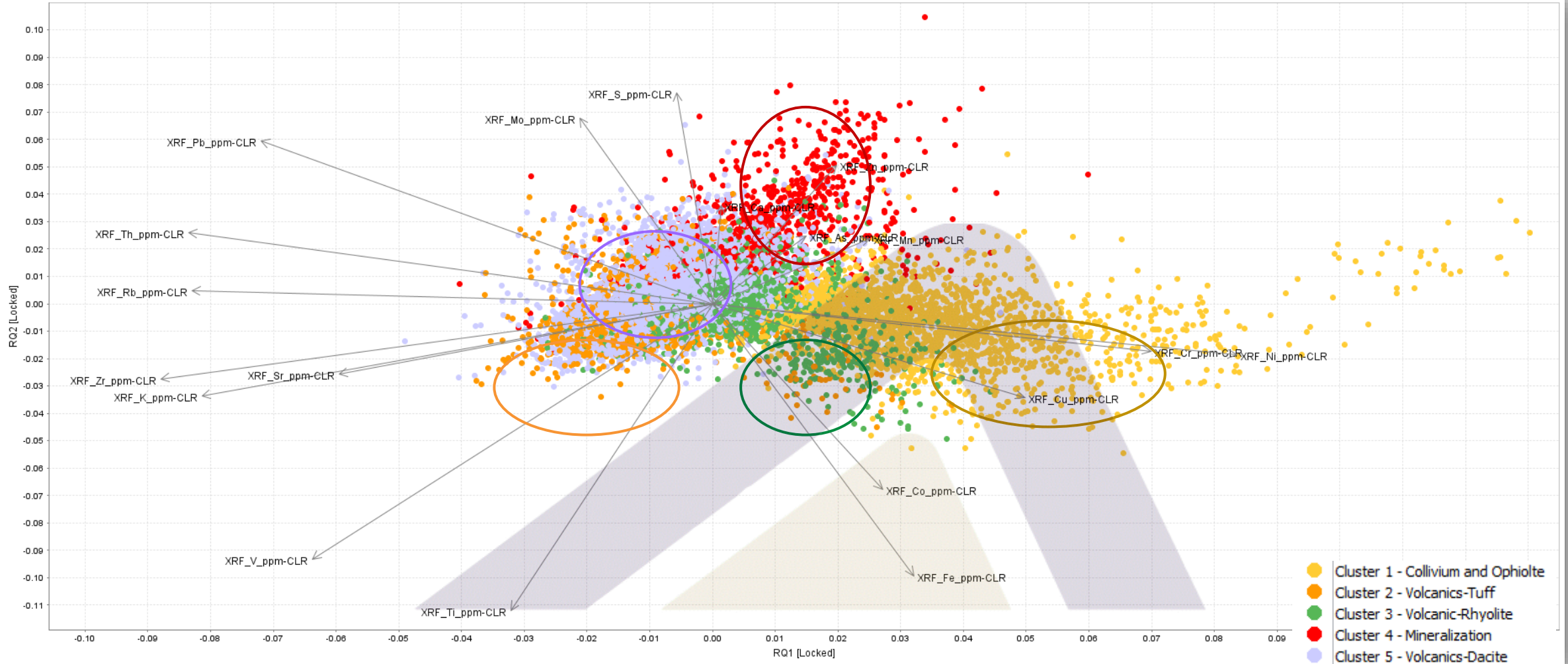
Borehole Depth	Logged Depth	Section	Time Stamp	Laser Profiler	Magnetic Susceptibility	Greyscale Reflectance	CIE XYZ Colour Space			CIE L*a*b* Colour Space			XRF Total Live Time
m	cm			mm	$\times 10^{-5}$ SI		X	Y	Z	L*	a*	b*	Seconds
4,1	413	5	10.08.2021 15:16	75,31	5,619	31,26	30,07	30,73	20,94	62,28	3,29	19,51	26
4,8	483	5	10.08.2021 15:19	73,479	3,64	48,918	46,69	48,89	42,33	75,38	0,62	11,59	26,3
5,01	508	6	10.08.2021 15:21	73,135	5,55	42,703	40,8	42,46	33,62	71,19	1,37	15,14	26,1
6,295	635	7	10.08.2021 15:25	71,957	5,152	61,356	58,22	61,47	54,98	82,63	-0,5	10,79	26,4
6,395	645	7	10.08.2021 15:26	72,486	7,803	23,344	23,12	22,1	10,96	54,13	9,8	27,88	26,1
7,49	755	8	10.08.2021 15:30	71,031	2,912	60,919	58,06	60,17	46,07	81,93	2,12	18,7	26,6
8,1692	835	9	10.08.2021 15:54	74,165	5,952	52,414	49,44	52,97	46,75	77,86	-2,45	10,94	27
8,44	865	9	10.08.2021 15:56	74	3,641	51,476	48,42	52,39	48,32	77,51	-3,72	8,67	26
8,54	875	9	10.08.2021 15:57	73,817	2,25	52,104	49,07	52,43	42,3	77,54	-2,08	15,35	26,4
8,97	925	10	10.08.2021 16:00	70,757	5,094	69,837	66,22	70,42	68,06	87,2	-1,57	6,93	26,2
9,07	935	10	10.08.2021 16:01	71,311	6,283	44,063	41,52	44,32	35,44	72,44	-1,83	14,91	26,1
9,24	952	10	10.08.2021 16:01	71,887	3,968	51,859	48,97	52,76	49,77	77,73	-3,2	7,55	26,1
9,62	990	10	10.08.2021 16:05	75,515	2,12	52,14	49,38	52,46	43,11	77,56	-1,29	14,44	26,8
10,14	1045	11	10.08.2021 16:08	79,27	2,781	63,699	60,48	64,11	59,91	84,02	-1,09	8,56	26,6
10,34	1065	11	10.08.2021 16:09	74,244	3,438	68,866	65,32	68,93	60,65	86,47	-0,44	12,11	26,5
10,58	1090	11	10.08.2021 16:11	75,754	2,252	69,497	65,93	69,87	68,21	86,93	-1,07	6,34	27,1
10,79	1115	12	10.08.2021 16:14	72,369	2,979	76,785	73,04	76,63	74,53	90,15	0,43	6,76	26,9
10,95	1131	12	10.08.2021 16:15	77,262	1,722	67,261	63,92	66,5	57,57	85,25	1,63	12,84	26,6
11,17	1153	12	10.08.2021 16:17	71,389	0,335	75,004	71,59	73,82	67,27	88,84	3,03	10,41	27
11,3	1170	12	10.08.2021 16:18	76,6	0,667	65,517	62,12	65,96	60,82	84,97	-1,31	9,38	27,2
11,5	1190	12	10.08.2021 16:20	71,996	0,731	68,121	64,69	68,6	66,47	86,31	-1,16	6,73	26,6
11,97	1237	13	10.08.2021 16:44	72,09	1,716	74,603	71,08	73,92	73,22	88,88	1,77	5,61	27,5
12,22	1262	13	10.08.2021 16:46	72,354	2,443	69,815	66,28	68,76	59,72	86,38	2,07	12,82	26,6
12,39	1279	13	10.08.2021 16:47	72,499	3,037	73,235	69,59	74,1	74,97	88,97	-1,8	4,38	26,3
12,5	1290	13	10.08.2021 16:48	72,579	1,323	71,998	68,38	70,79	60,3	87,38	2,41	14,01	26,3
12,72	1315	14	10.08.2021 16:52	78,022	3,57	65,002	62,22	63,96	60,39	83,95	3,34	8	26,1
12,82	1325	14	10.08.2021 16:53	74,114	2,845	64,158	61,33	62,97	63,33	83,42	3,52	4,47	26,3

Veri Değerlendirme

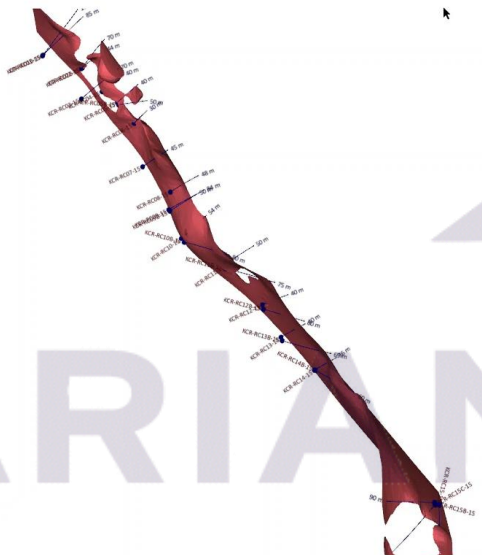
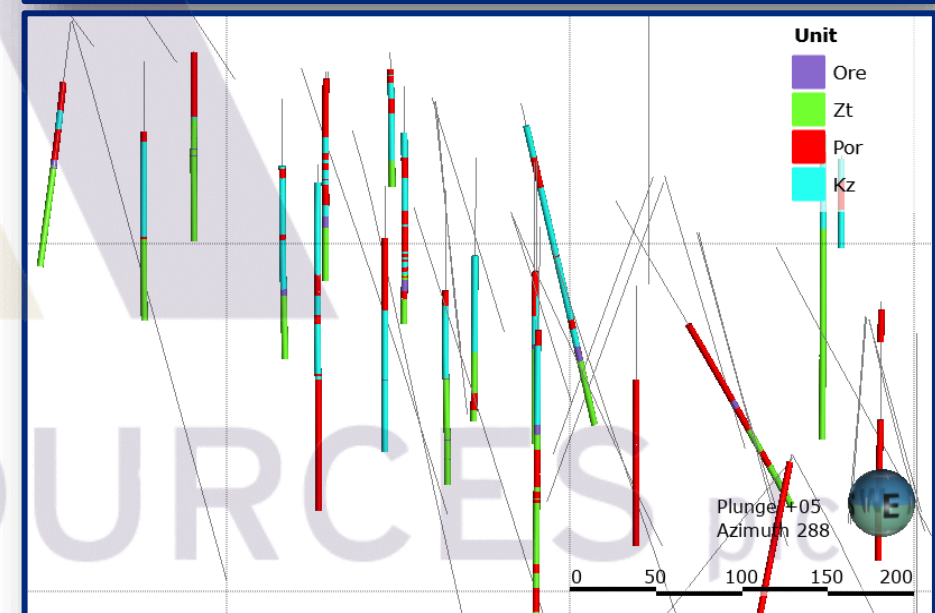
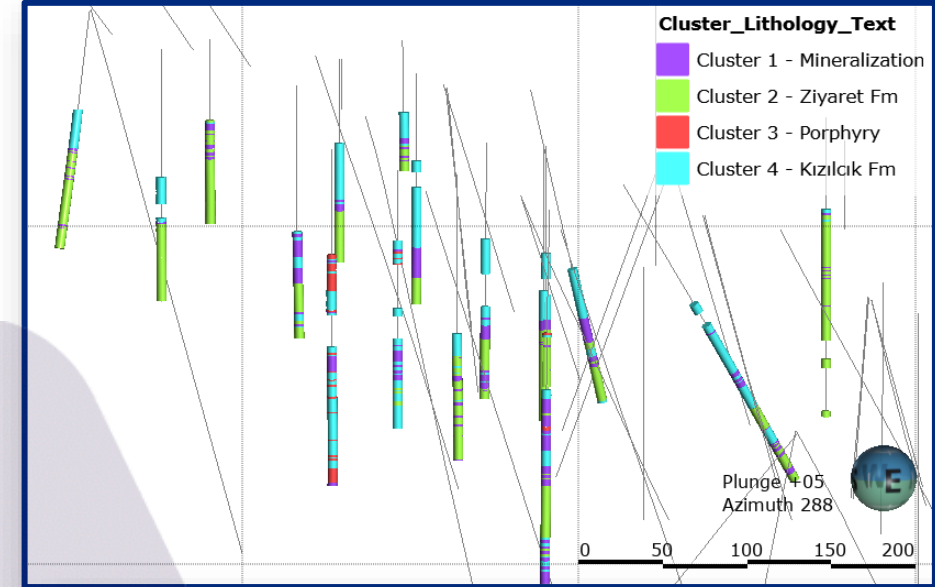
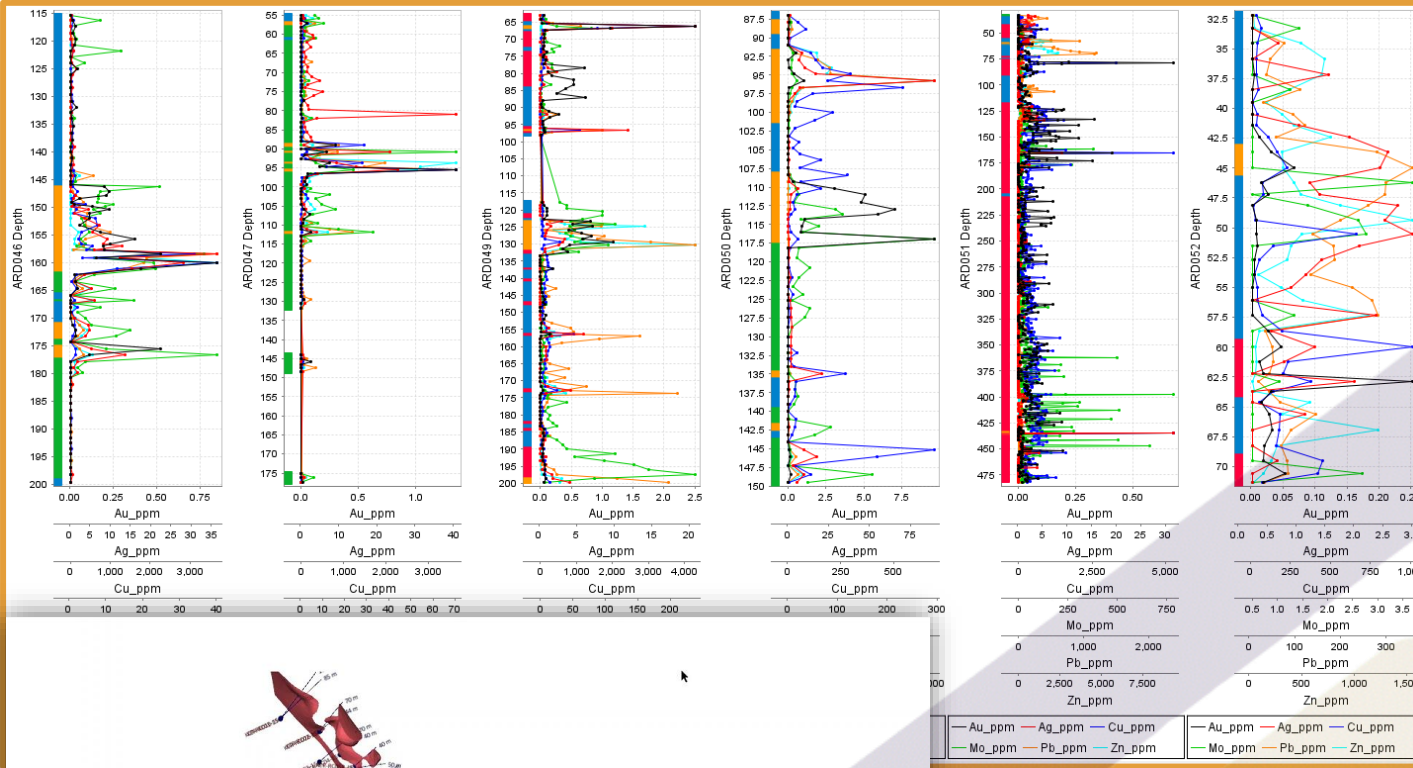


Veri Değerlendirme

RQ1 - RQ2



Veri Değerlendirme



ARIANA RESOURCES

Teşekkür Ederiz

ARIANA RESOURCES plc

Daha fazla bilgi için:
b.ugurlu@arianaresources.com