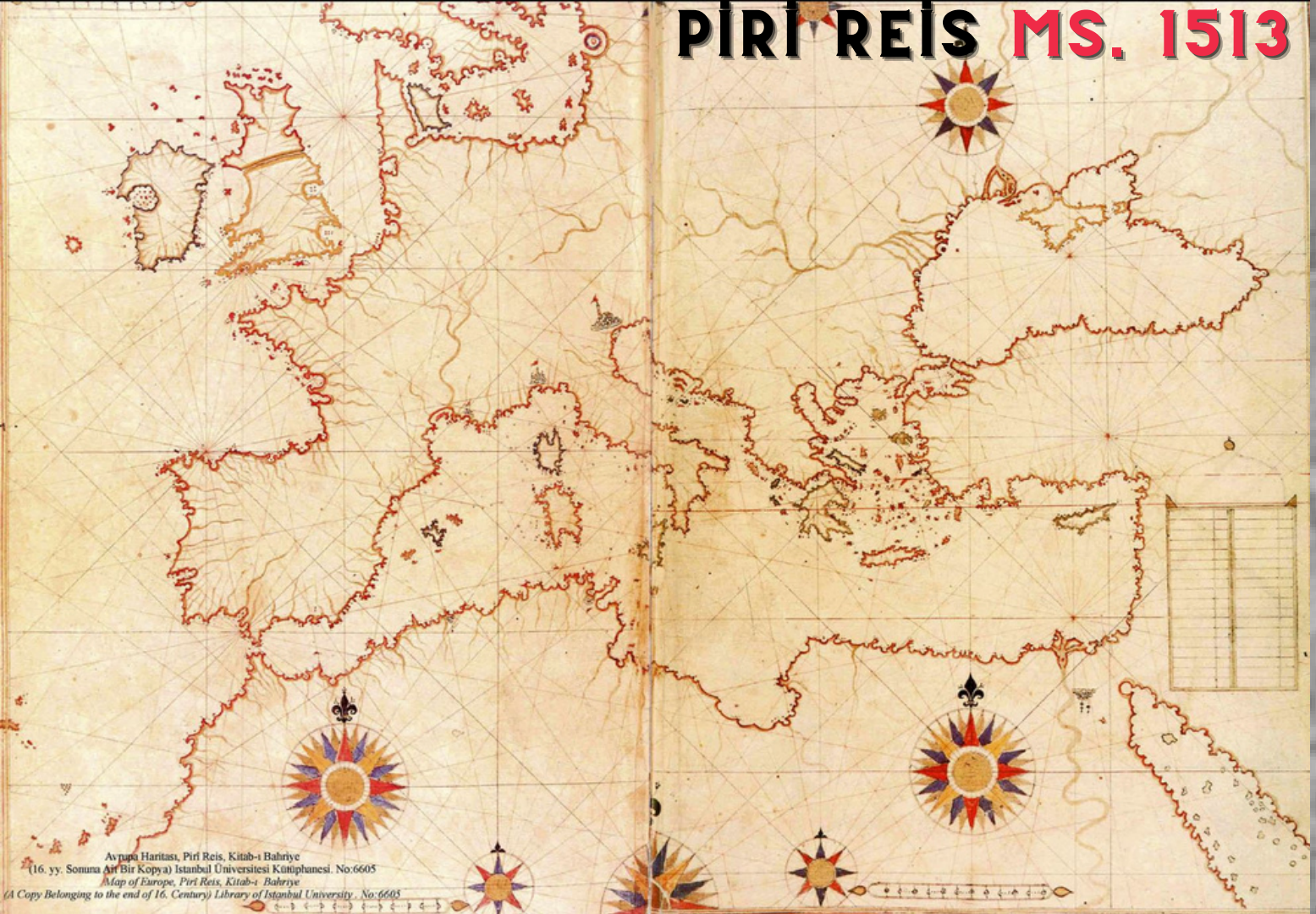




**WHERE WE R
IN GIS
TECHNOLOGY**

EVREN YÜCEL

PİRİ REİS MS. 1513



Avrupa Haritası, Piri Reis, Kitab-ı Bahriye
(16. yy. Sonuna Ait Bir Kopya) İstanbul Üniversitesi Kutuphanesi, No.6605
Map of Europe, Piri Reis, Kitab-ı Bahriye
(A Copy Belonging to the end of 16. Century) Library of Istanbul University, No.6605

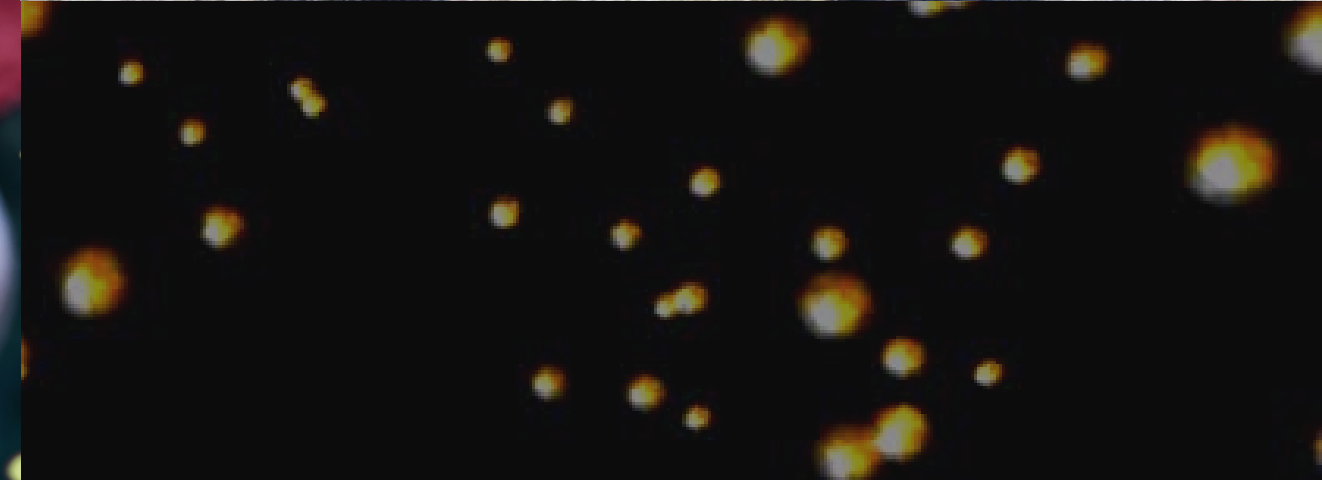
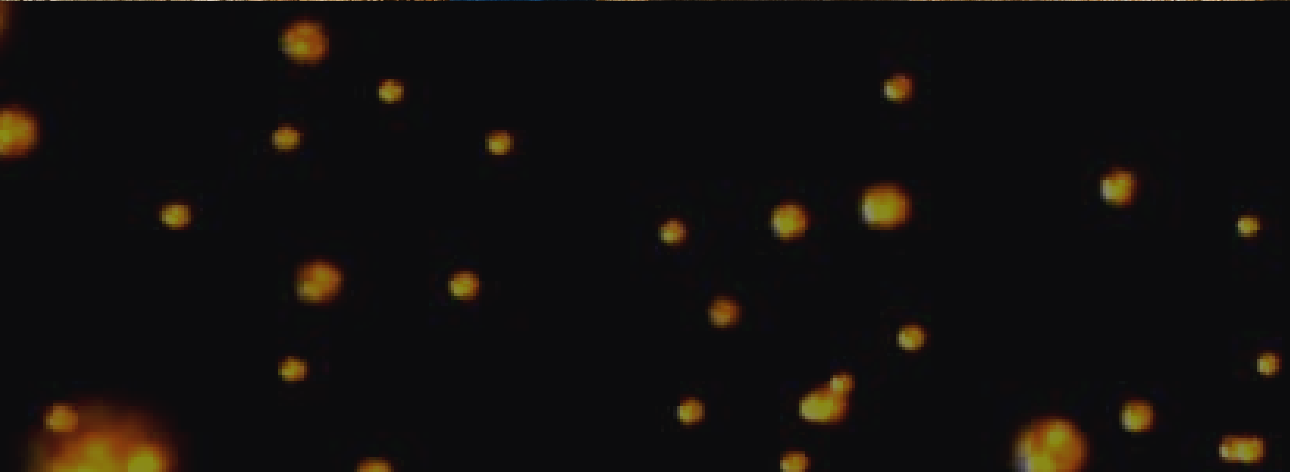


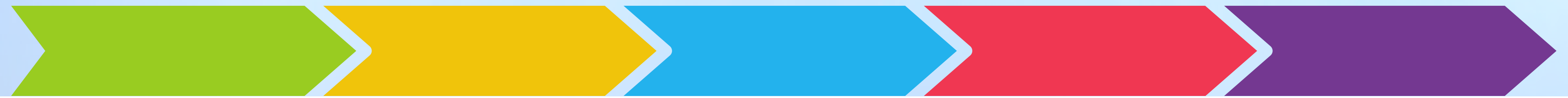
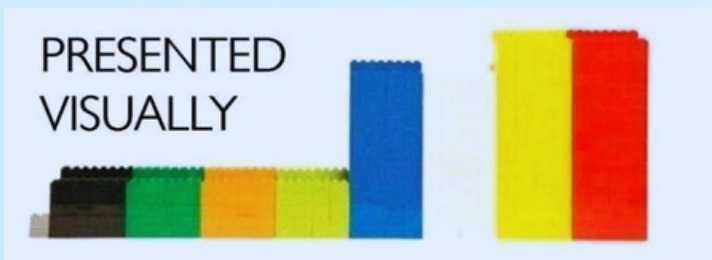
BATLAMYUS (PTOLEMAYOS) MS. 150

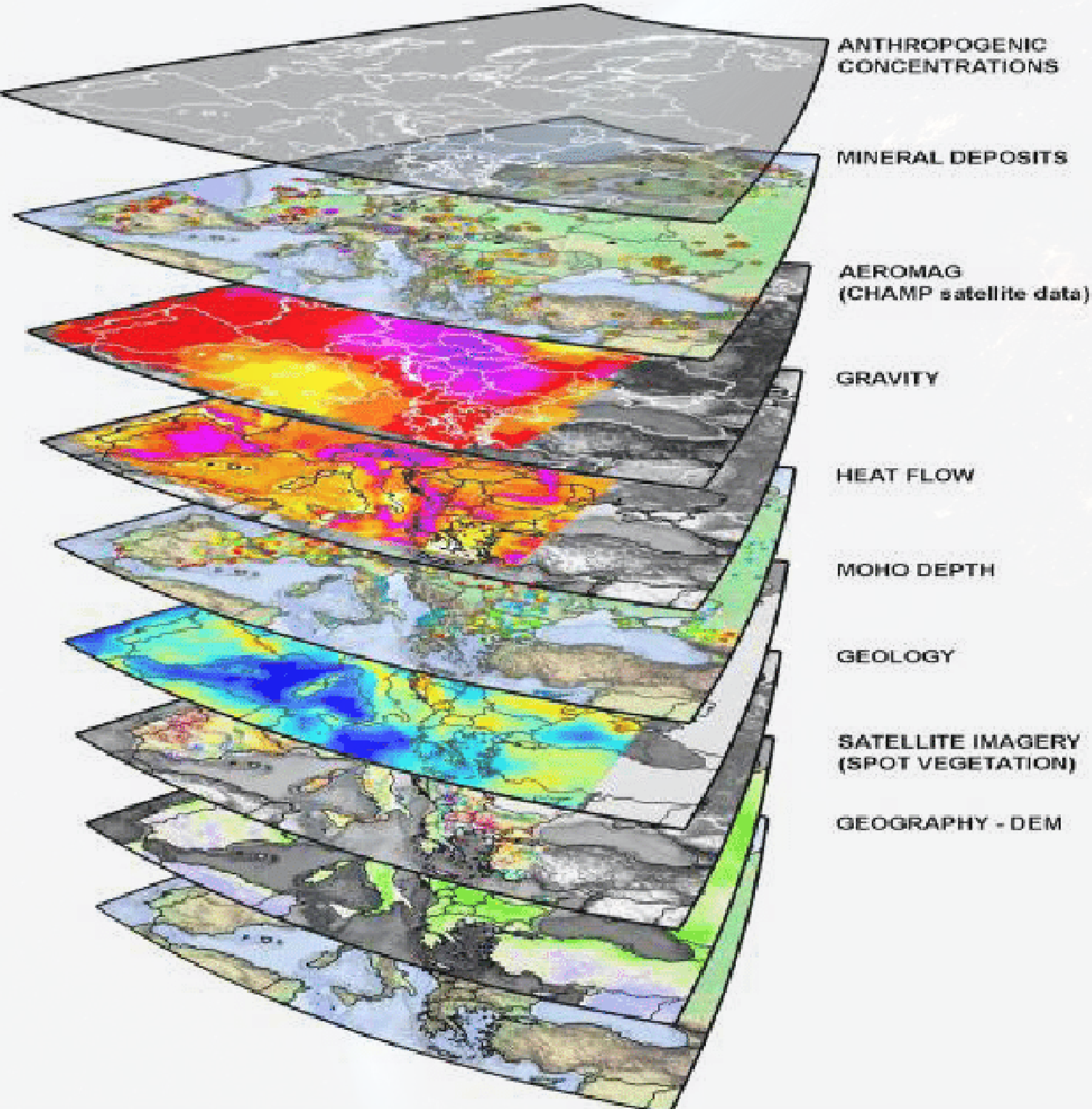




(see -oid). from GK
geology • n. 1 the science of the structure and substance of the earth and the features of a district.
— DERIVATIVES geologic
adj geologist n geologist





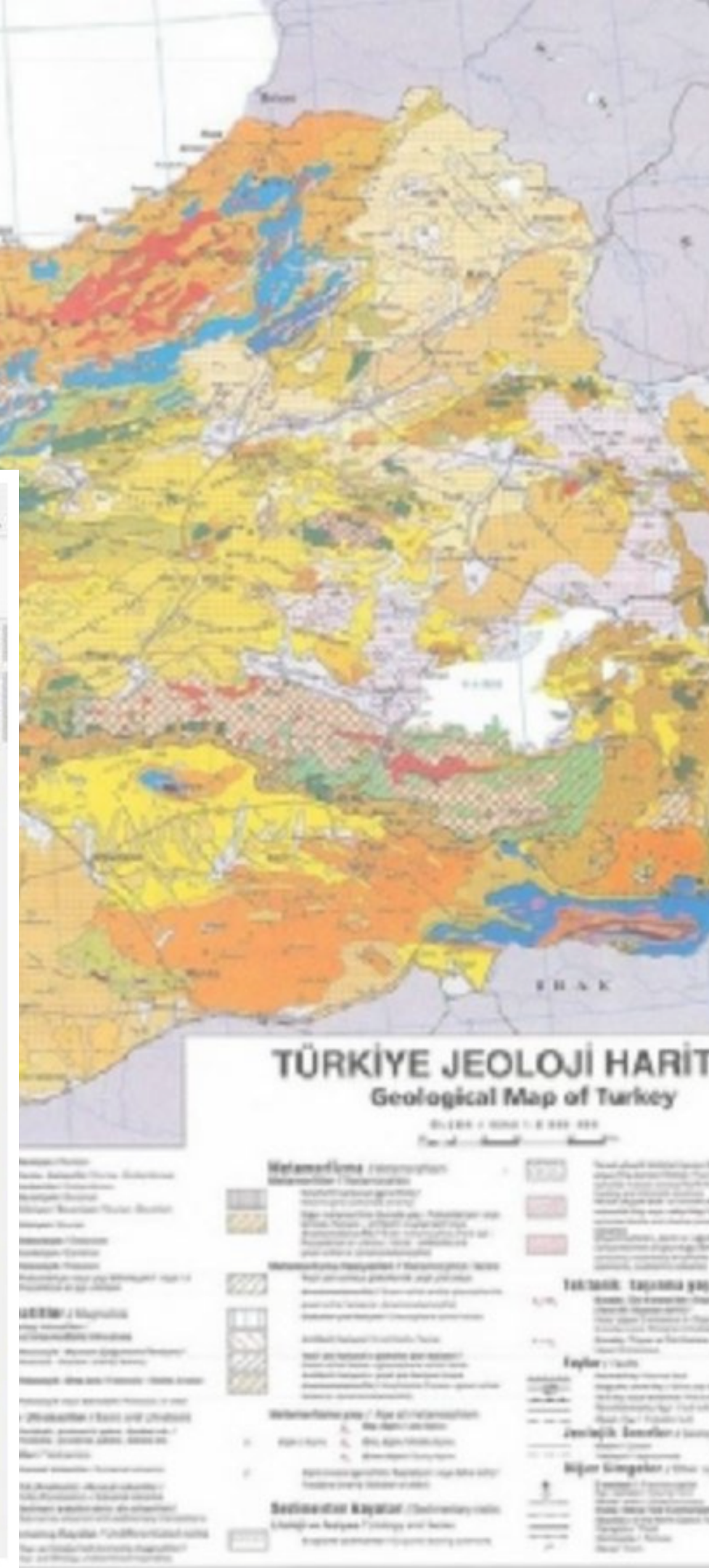
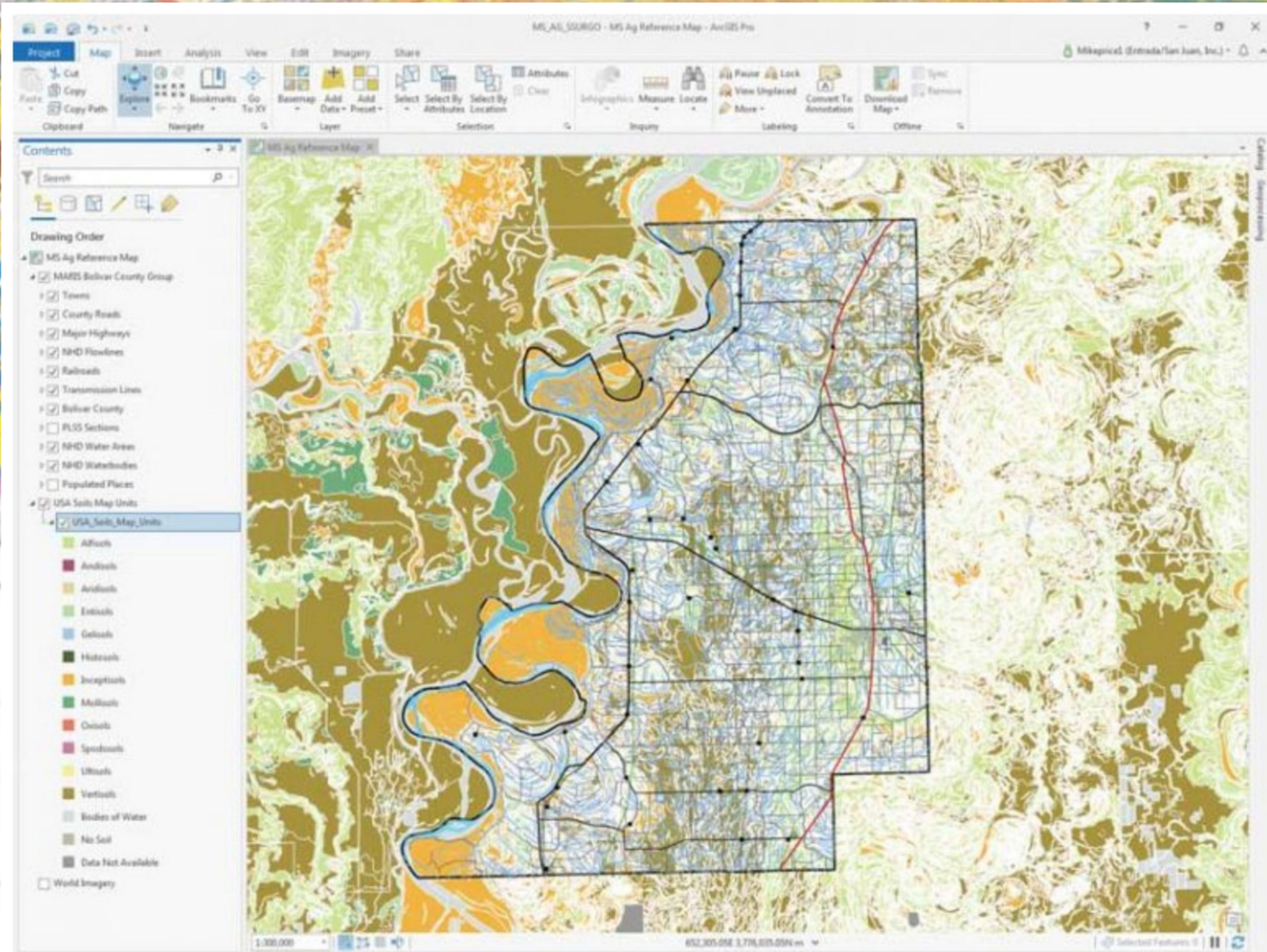


Mapping
 Geology
 Surveying

Natural Resources Management

- Telecom and Network Services
- Accident Analysis and Hot Spot Analysis
- Urban planning
- Transportation Planning
- Environmental Impact Analysis
- Agricultural Applications
- Disaster Management and Mitigation
- Navigation
- Flood damage estimation
- Banking
- Taxation
- Assets Management and Maintenance
- Planning and Community Development
- Dairy Industry
- Irrigation Water Management
- Pest Control and Management

Mapping

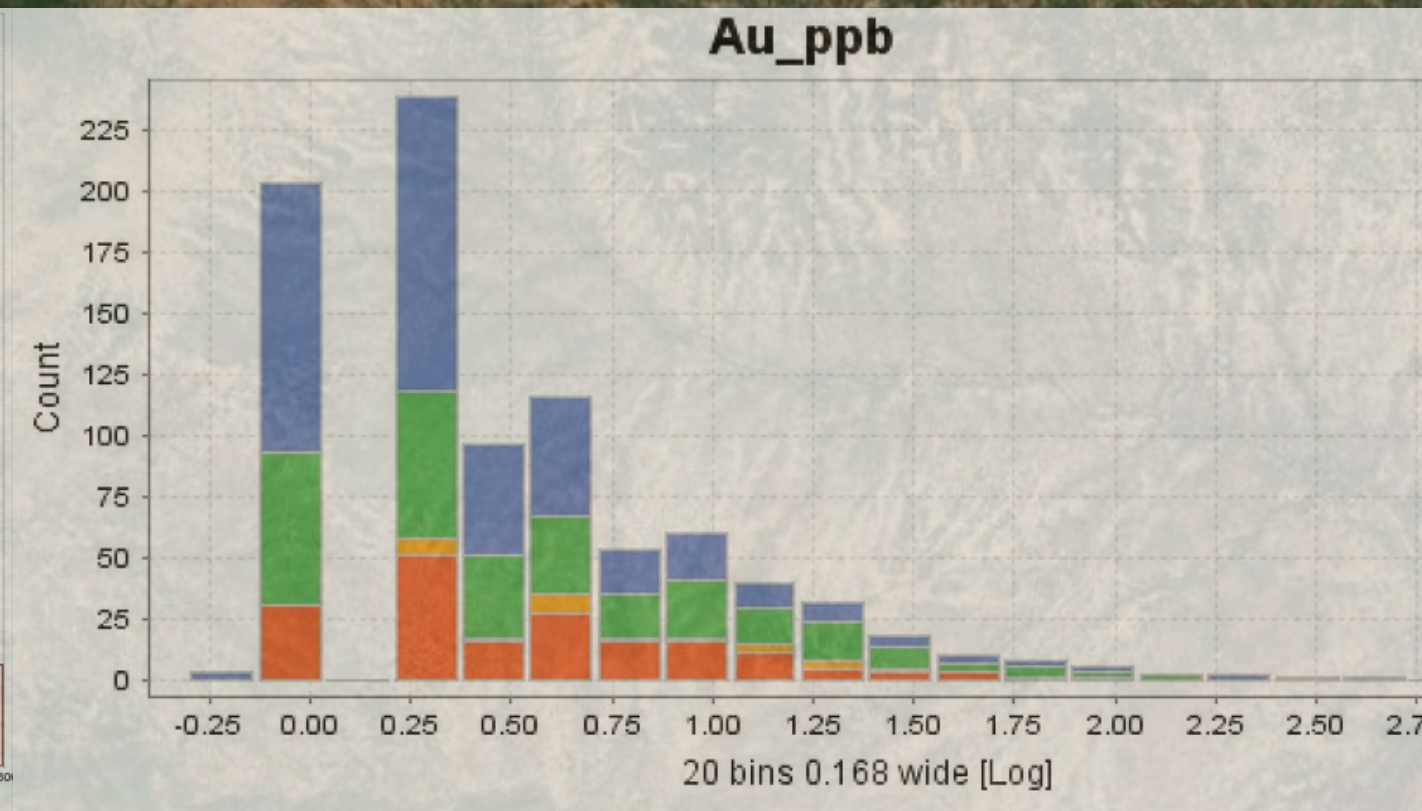
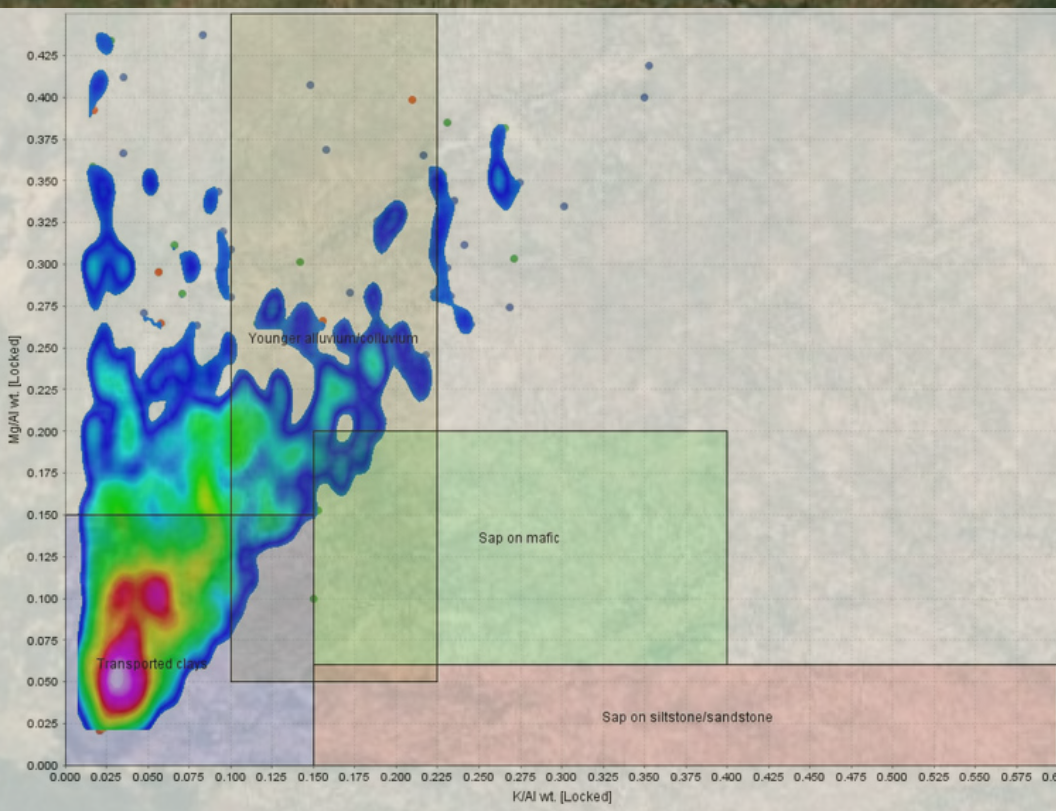
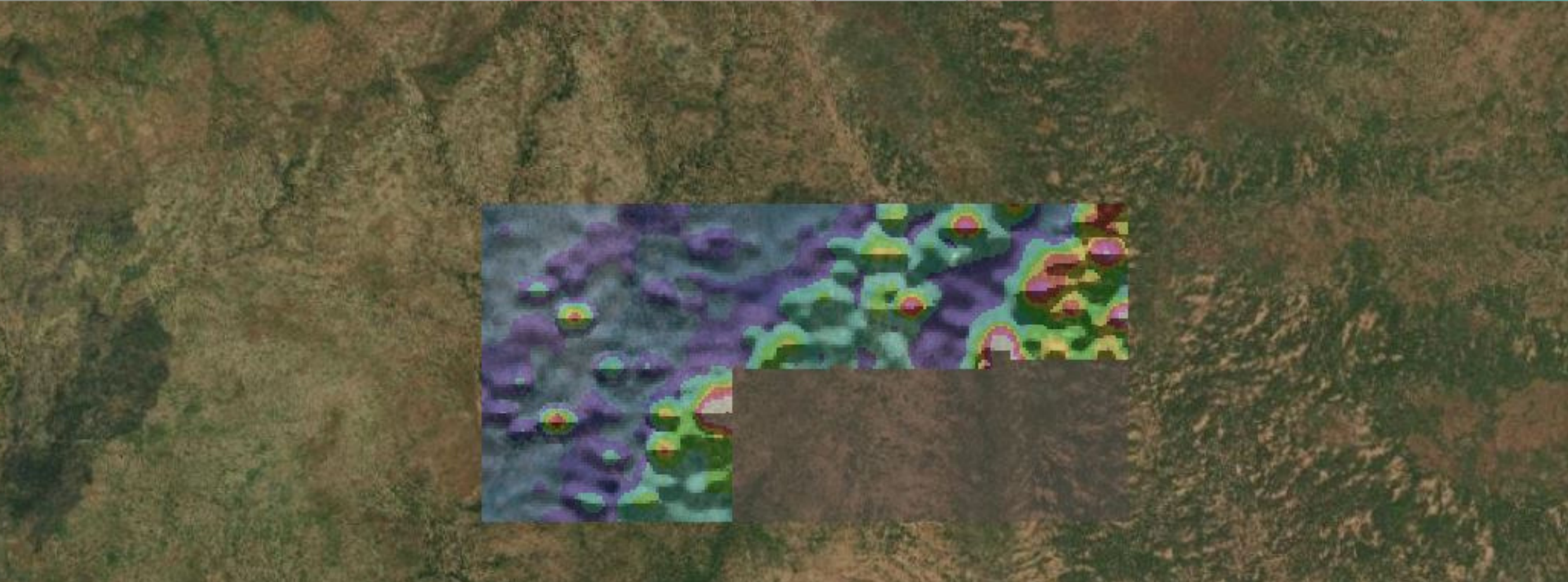


Digital Field Mapping

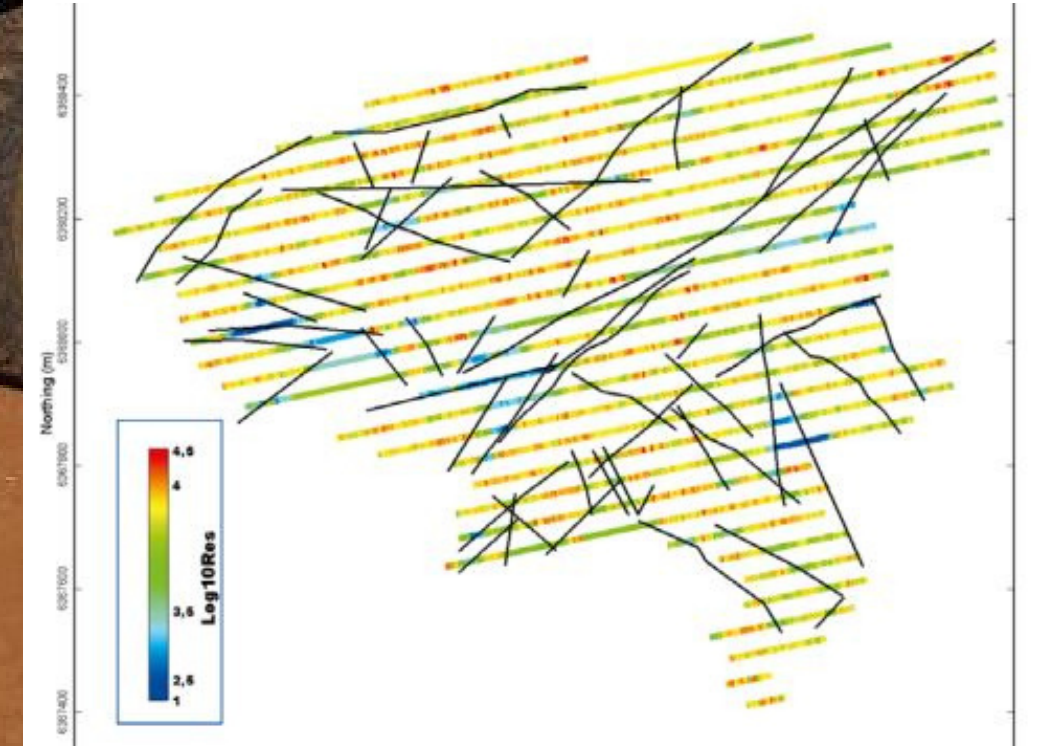
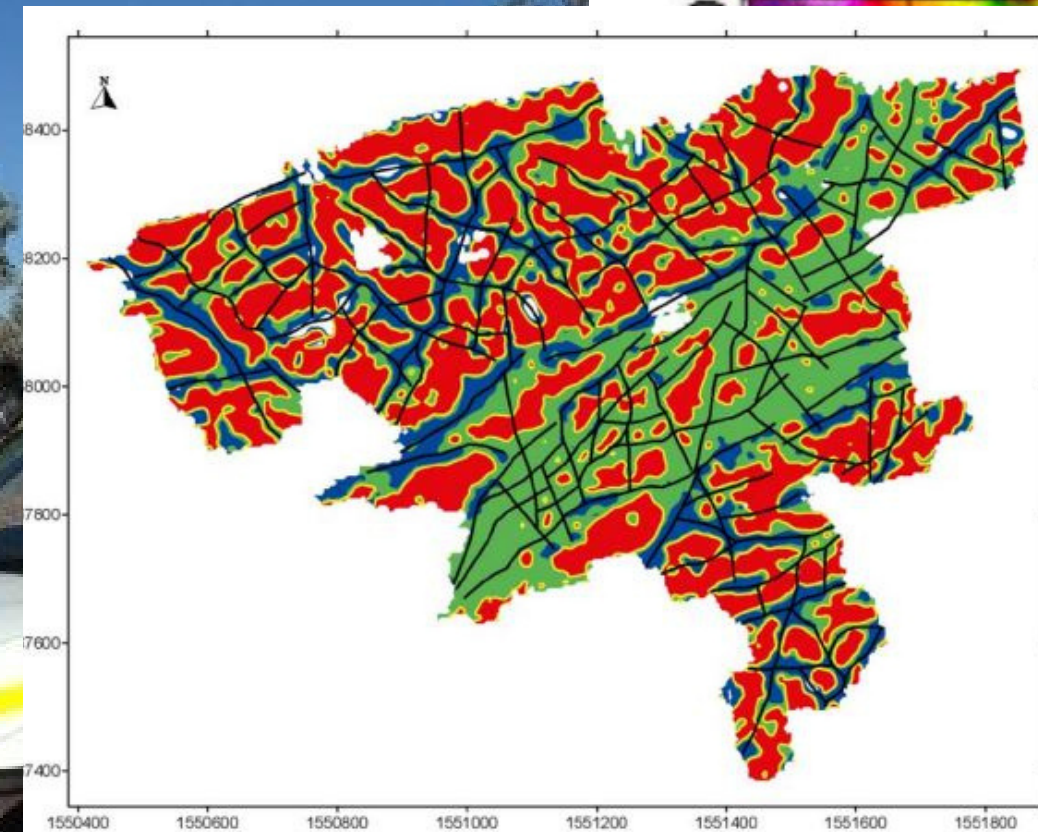


Geochemistry

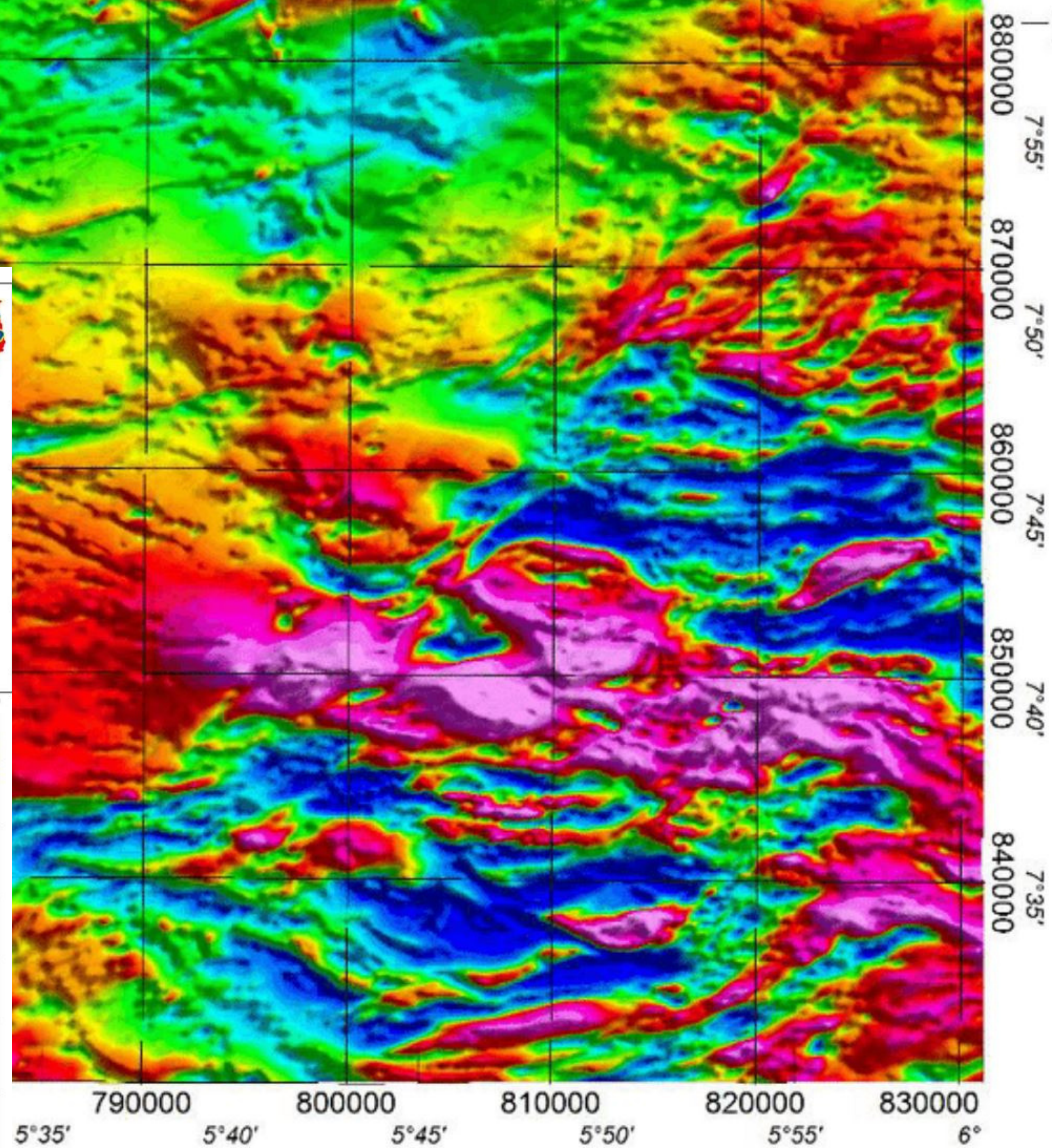
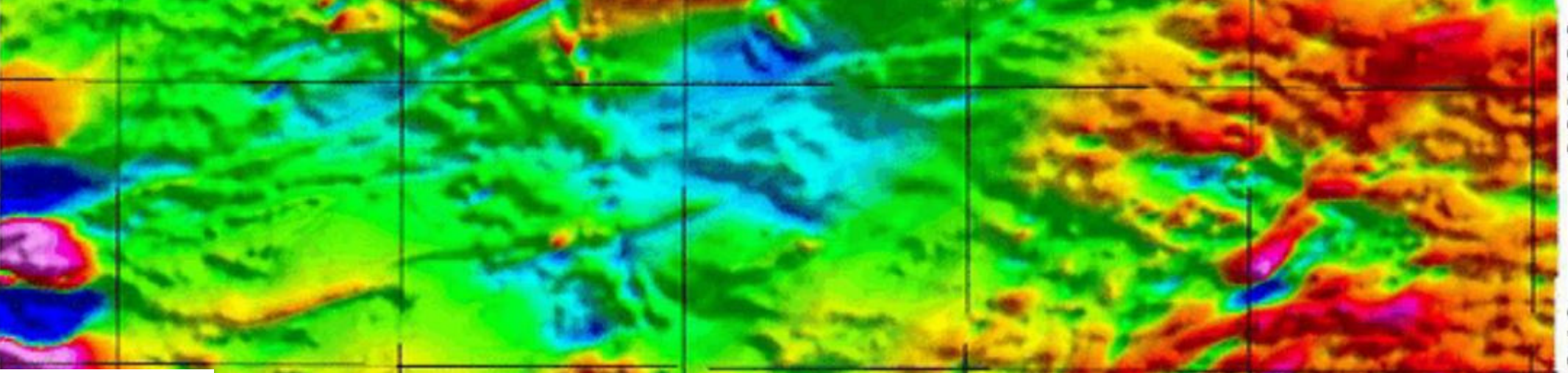
Correlation - 887 ro...	Au_ppb	Ag_ppm	As_ppm	Sb_ppm	W_ppm	Te_ppm	Bi_ppm	S_pct	Mo_ppm
Au_ppb	1	0.11	0.19	0.16	0.066	0.3	0.056	-0.024	0.11
Ag_ppm	0.11	1	0.35	0.32	0.11	0.24	0.04	0.055	0.25
As_ppm	0.19	0.35	1	0.86	0.23	0.6	0.091	-0.014	0.75
Sb_ppm	0.16	0.32	0.86	1	0.24	0.51	0.061	0.03	0.67
W_ppm	0.066	0.11	0.23	0.24	1	0.17	0.27	-0.0069	0.25
Te_ppm	0.3	0.24	0.6	0.51	0.17	1	0.13	-0.0091	0.54
Bi_ppm	0.056	0.04	0.091	0.061	0.27	0.13	1	-0.073	0.25
S_pct	-0.024	0.055	-0.014	0.03	-0.0069	-0.0091	-0.073	1	-0.025
Mo_ppm	0.11	0.25	0.75	0.67	0.25	0.54	0.25	-0.025	1



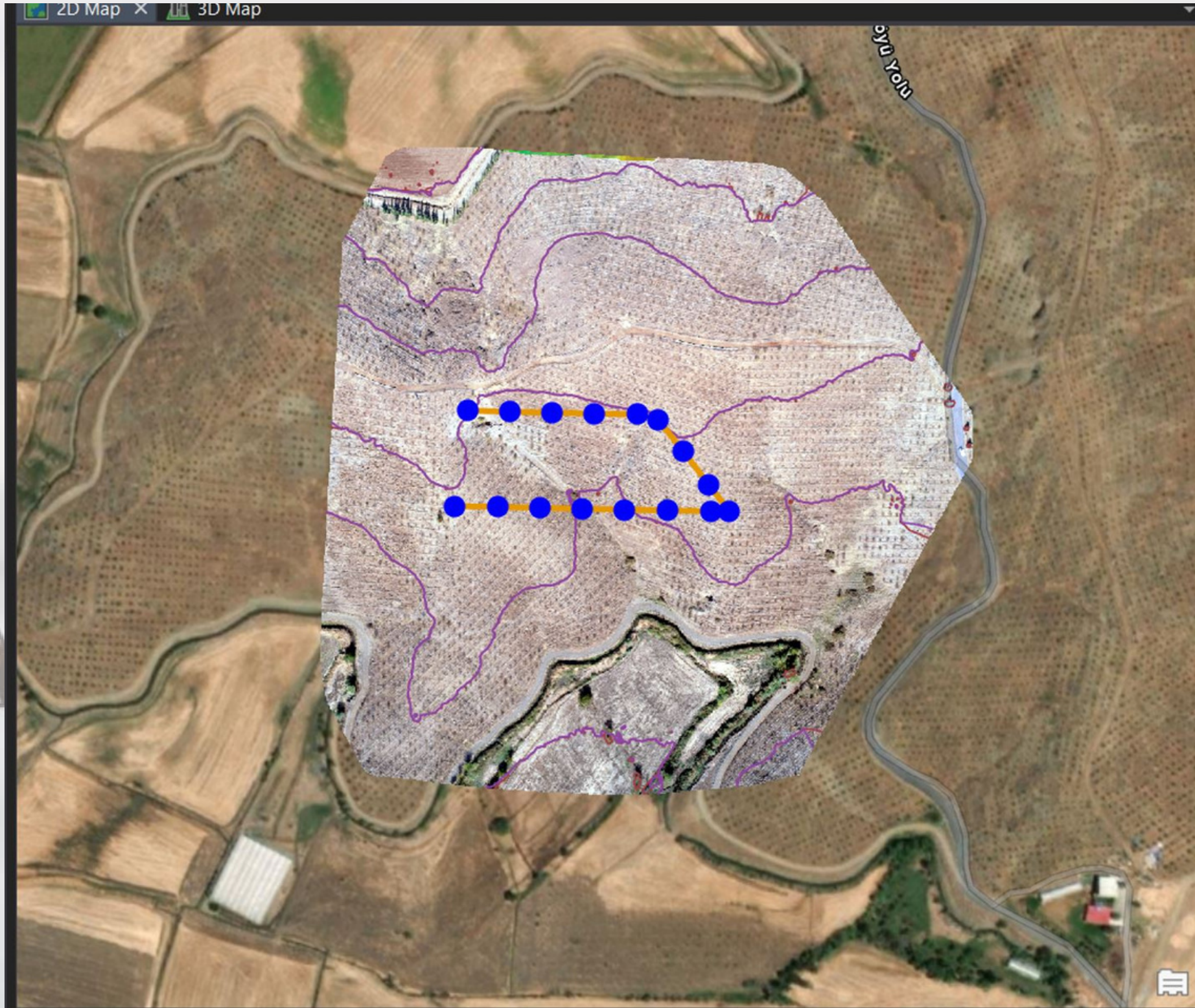
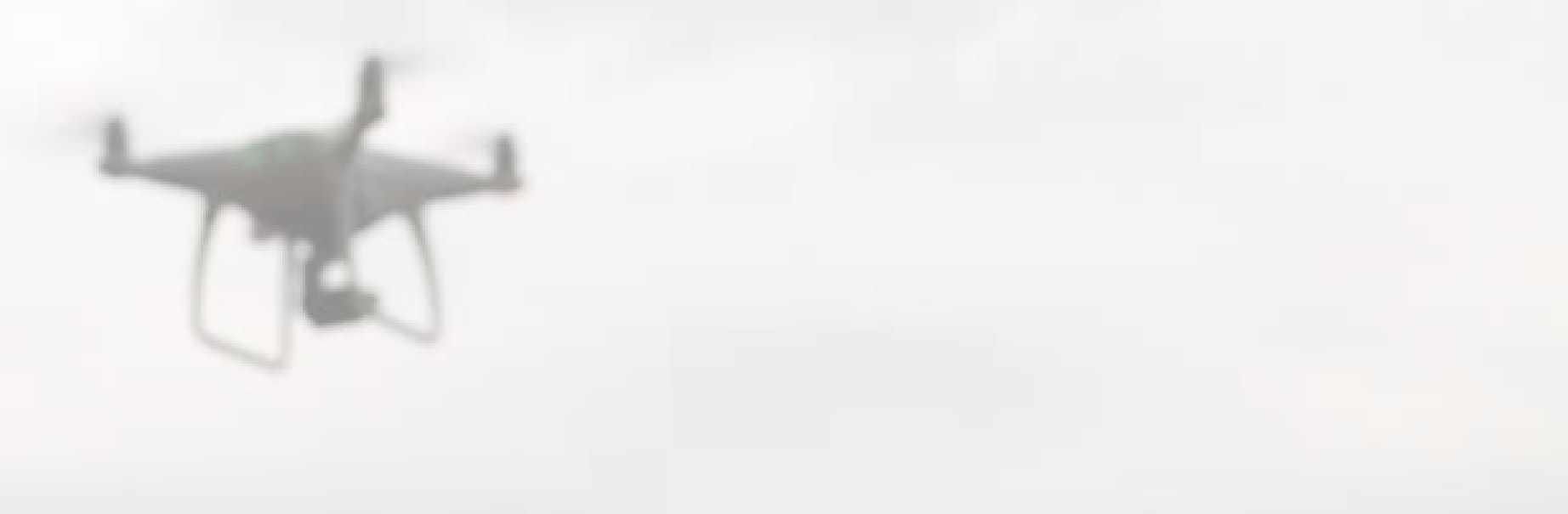
Ground Magnetic



7°55'
880000
1000



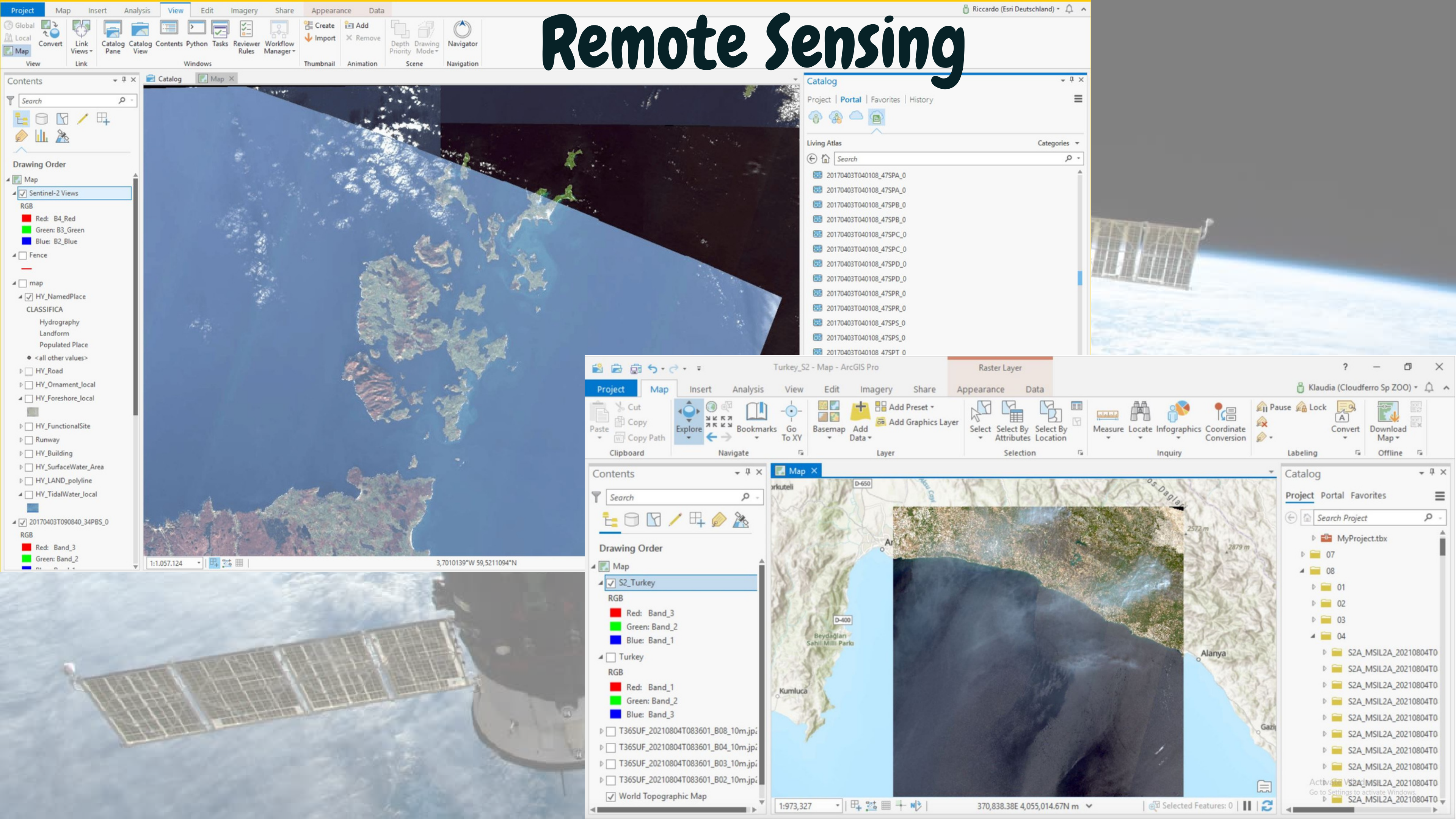
Drone



Drone



Remote Sensing



Dashboards

Last Updated at (M/D/YYYY)
9/14/2022, 1:20 PM

Total Cases
609,875,865

Total Deaths
6,518,180

Total Vaccine Doses Administered
12,216,081,992

[Cases](#) | [Deaths by Country/Region/Sovereignty](#)

Japan
 28-Day: **4,335,440** | **7,315**
 Totals: **20,296,689** | **43,023**

28-Day Cases
17,361,284

28-Day Deaths
57,327

28-Day Vaccine Doses Administered
166,801,054

Korea, South
 28-Day: **2,416,318** | **1,781**
 Totals: **24,193,038** | **27,593**

US
 28-Day: **2,221,158** | **12,954**
 Totals: **95,388,380** | **1,051,303**

Russia
 28-Day: **1,208,510** | **2,258**
 Totals: **19,915,400** | **377,823**

Germany
 28-Day: **892,004** | **2,468**
 Totals: **32,558,479** | **148,498**

Taiwan*
 28-Day: **826,929** | **856**
 Totals: **5,804,343** | **10,366**

Italy
 28-Day: **559,236** | **2,163**
 Totals: **22,077,601** | **176,335**

France
 28-Day: **529,956** | **1,351**
 Totals: **34,981,352** | **155,618**

Brazil
 28-Day: **343,097** | **3,239**
 Totals: **34,544,377** | **685,002**

China
 28-Day: **289,515** | **240**
 Totals: **2,644,206** | **15,052**

Australia
 28-Day: **273,301** | **1,434**
 Totals: **10,122,875** | **14,458**

India
 28-Day: **223,801** | **1,082**
 Totals: **44,507,471** | **528,216**

Greece
 28-Day: **184,074** | **866**
 Totals: **4,838,811** | **32,894**

Turkey
 28-Day: **180,534** | **668**
 Totals: **16,852,382** | **101,068**

Chile
 28-Day: **175,251** | **794**
 Totals: **4,568,495** | **60,822**

